

COPYRIGHT COMPOSITEcore / DORALCO

COMPOSITEcore
'Architectural Cladding Systems'

A Division Of DORALCO - Architectural Metal Solutions

5919 W. 118th Street
Alsip, IL 60803

Tele: 708.388.9324
Fax: 708.388.9392

www.doralco.com

VERTICAL JOINT

TITLE:

CCRS - DRY JOINT RAIN SCREEN SYSTEM
1000 SERIES (3/4" JOINT)

PROJECT:

DRAWN BY:

JOB No:

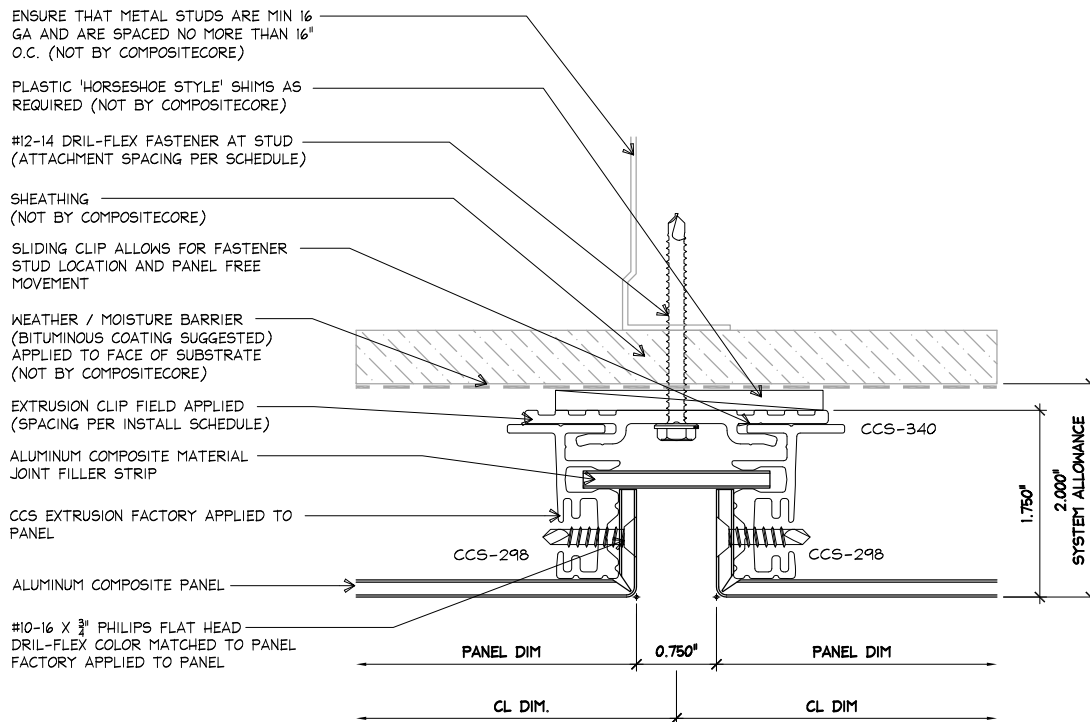
CHECK BY:

DATE:

D-01

SHEET No:

OF:



COPYRIGHT COMPOSITEcore / DORALCO

COMPOSITEcore
'Architectural Cladding Systems'

A Division Of DORALCO - Architectural Metal Solutions

5919 W. 118th Street
Alsip, IL 60803

Tele: 708.388.9324
Fax: 708.388.9392

www.doralco.com

VERTICAL STARTING JOINT

TITLE:

CCRS - DRY JOINT RAIN SCREEN SYSTEM
1000 SERIES (3/4" JOINT)

PROJECT:

DRAWN BY:

JOB No:

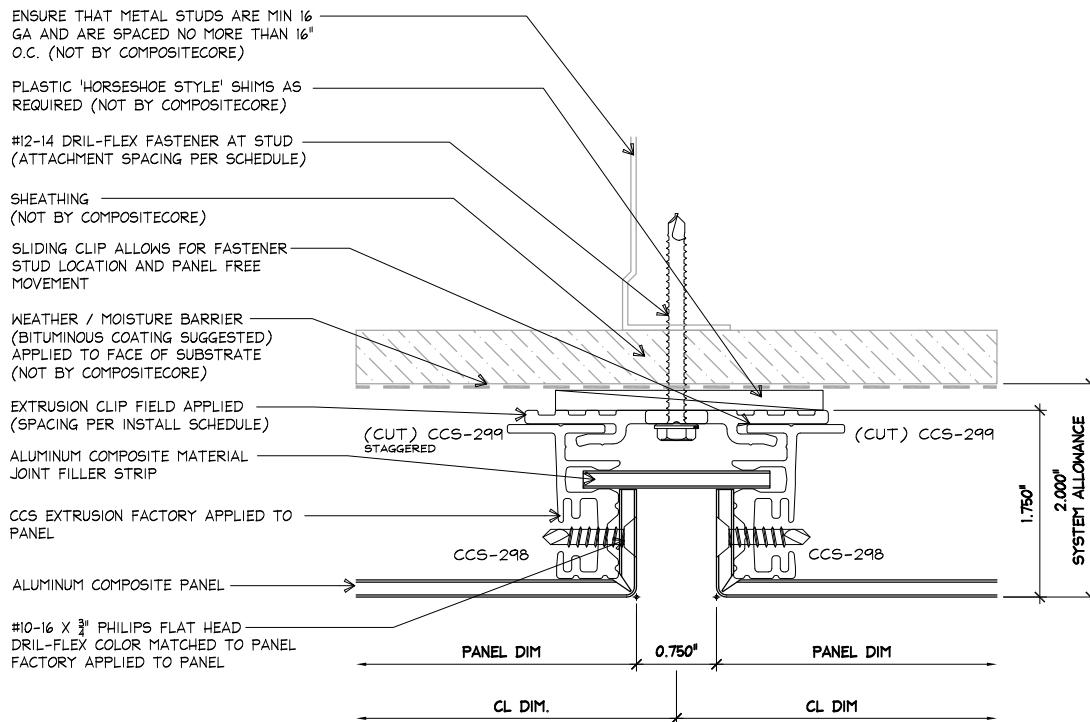
CHECK BY:

DATE:

D-01A

SHEET No:

OF:



COPYRIGHT COMPOSITEcore / DORALCO

COMPOSITEcore
'Architectural Cladding Systems'

A Division Of DORALCO - Architectural Metal Solutions

5919 W. 118th Street
Alsip, IL 60803

Tele: 708.388.9324
Fax: 708.388.9392

www.doralco.com

VERTICAL STARTING JOINT - STAGGERED CLIPS

TITLE:

CCRS - DRY JOINT RAIN SCREEN SYSTEM
1000 SERIES ($\frac{3}{4}$ " JOINT)

PROJECT:

DRAWN BY:

JOB No:

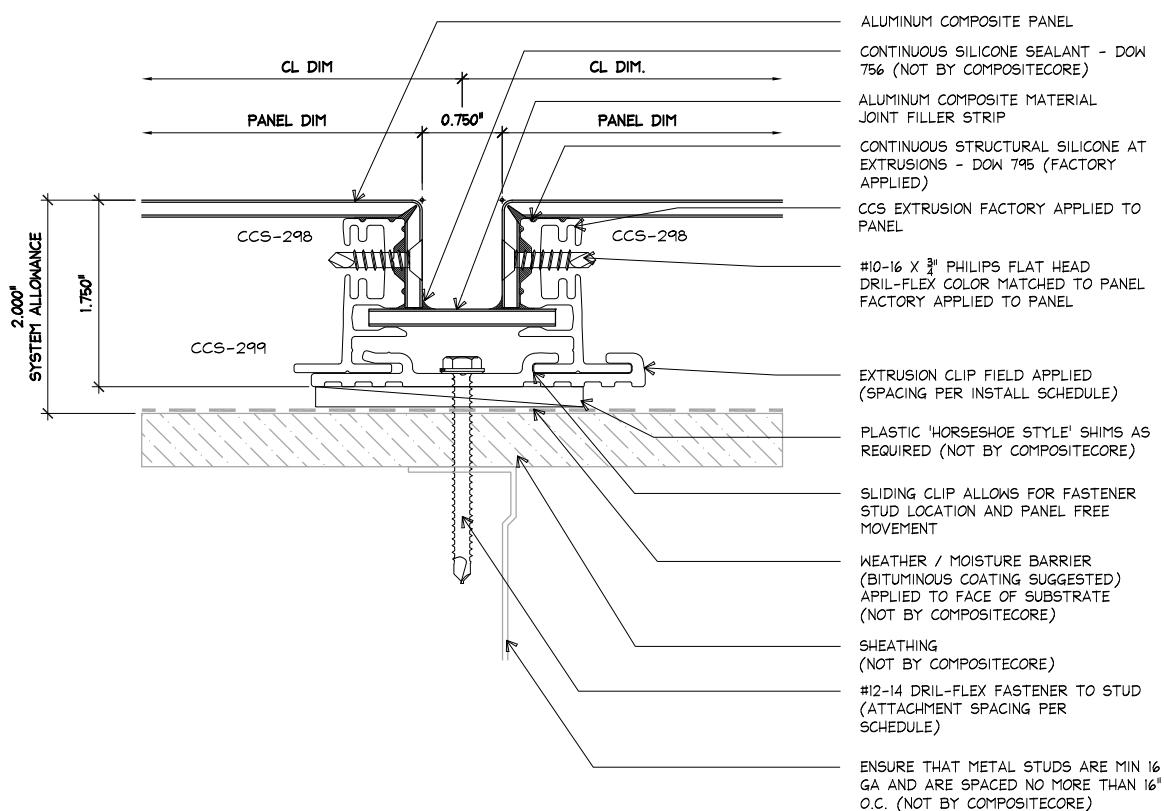
CHECK BY:

DATE:

D-01B

SHEET No:

OF:



DETAIL RECOMMENDED TO BE USED ONLY IN A HORIZONTAL WATER INTRUSION APPLICATION.

COPYRIGHT COMPOSITEcore / DORALCO

COMPOSITEcore
'Architectural Cladding Systems'

A Division Of DORALCO - Architectural Metal Solutions
5919 W. 118th Street
Alsip, IL 60803
Tele: 708.388.9324
Fax: 708.388.9392

www.doralco.com

VERTICAL JOINT - 'DRY JOINT WET SEAL'

TITLE:

CCRS - DRY JOINT RAIN SCREEN SYSTEM
1000 SERIES (3/4" JOINT)

PROJECT:

DRAWN BY:

JOB No:

CHECK BY:

DATE:

D-01C

SHEET No:

OF:

ENSURE THAT METAL STUDS ARE MIN 16 GA AND ARE SPACED NO MORE THAN 16" O.C. (NOT BY COMPOSITECORE)

#12-14 DRIL-FLEX FASTENER AT STUD (ATTACHMENT SPACING PER SCHEDULE)

SHEATHING (NOT BY COMPOSITECORE)

WEATHER / MOISTURE BARRIER (BITUMINOUS COATING SUGGESTED) APPLIED TO FACE OF SUBSTRATE (NOT BY COMPOSITECORE)

PLASTIC 'HORSESHOE STYLE' SHIMS AS REQUIRED (NOT BY COMPOSITECORE)

#10-16 X 3/8" PHILIPS FLAT HEAD DRIL-FLEX COLOR MATCHED TO PANEL FACTORY APPLIED

KEEP HOLES WITH FOAM BAFFLES LOCATED BETWEEN PANEL EXTRUSION 2 PER PANEL

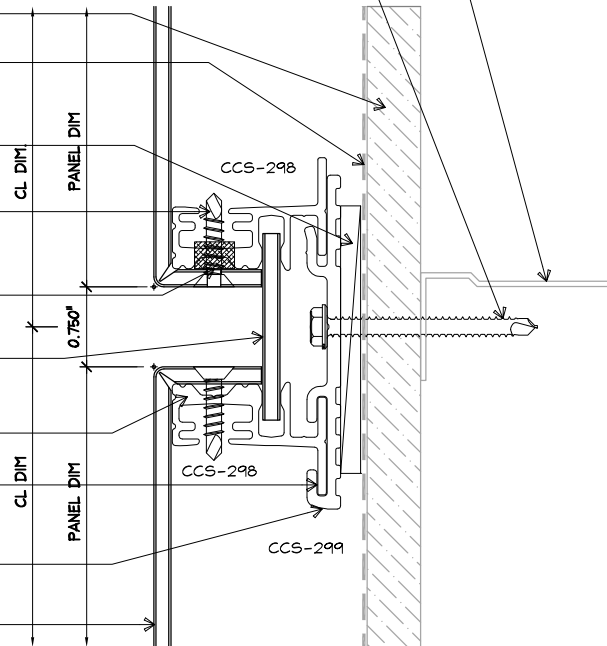
ALUMINUM COMPOSITE MATERIAL JOINT FILLER STRIP

CCS EXTRUSION FACTORY APPLIED TO PANEL

SLIDING CLIP ALLOWS FOR FASTENER STUD LOCATION AND PANEL FREE MOVEMENT

EXTRUSION CLIP FIELD APPLIED (SPACING PER INSTALL SCHEDULE)

ALUMINUM COMPOSITE PANEL



COPYRIGHT COMPOSITEcore / DORALCO

COMPOSITEcore
'Architectural Cladding Systems'

A Division Of DORALCO - Architectural Metal Solutions

5919 W. 118th Street
Alsip, IL 60803

Tele: 708.388.9324
Fax: 708.388.9392

www.doralco.com

HORIZONTAL JOINT

TITLE:

CCRS - DRY JOINT RAIN SCREEN SYSTEM
1000 SERIES (3/4" JOINT)

PROJECT:

DRAWN BY:

JOB No:

CHECK BY:

DATE:

D-02

SHEET No:

OF:

ENSURE THAT METAL STUDS ARE MIN
16 GA AND ARE SPACED NO MORE THAN
16" O.C. (NOT BY COMPOSITECORE)

#12-14 DRIL-FLEX FASTENER AT STUD
(ATTACHMENT SPACING PER SCHEDULE)

SHEATHING
(NOT BY COMPOSITECORE)

WEATHER / MOISTURE BARRIER
BITUMINOUS COATING SUGGESTED)
APPLIED TO FACE OF SUBSTRATE
(NOT BY COMPOSITECORE)

PLASTIC 'HORSESHOE STYLE' SHIMS AS
REQUIRED (NOT BY COMPOSITECORE)

#10-16 X 3/4" PHILIPS FLAT HEAD
DRIL-FLEX COLOR MATCHED TO PANEL
FACTORY APPLIED

WEEP HOLES WITH FOAM BAFFLES
2 PER PANEL

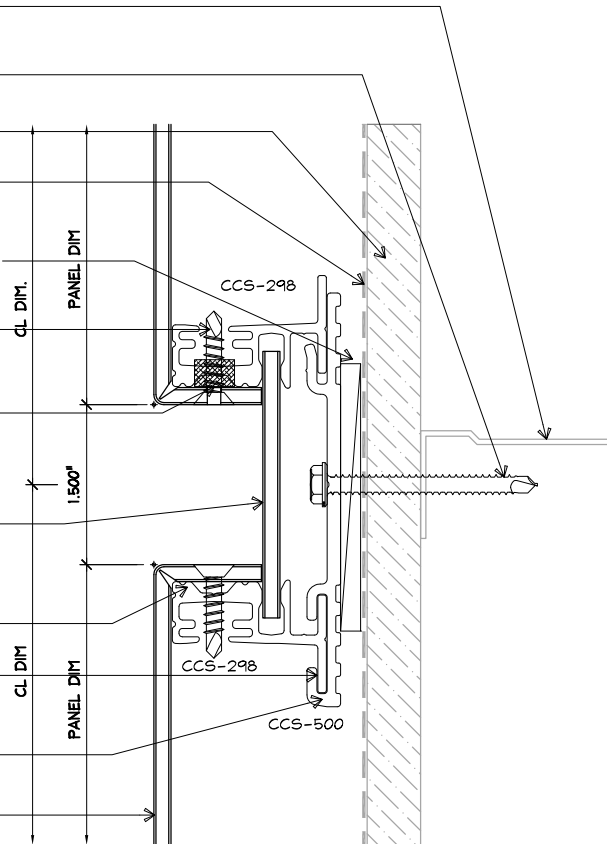
ALUMINUM COMPOSITE MATERIAL
JOINT FILLER STRIP

CCS EXTRUSION FACTORY APPLIED TO
PANEL

SLIDING CLIP ALLOWS FOR FASTENER
STUD LOCATION AND PANEL FREE
MOVEMENT

EXTRUSION CLIP FIELD APPLIED
(SPACING PER INSTALL SCHEDULE)

ALUMINUM COMPOSITE PANEL



COPYRIGHT COMPOSITEcore / DORALCO

COMPOSITEcore
'Architectural Cladding Systems'

A Division Of DORALCO - Architectural Metal Solutions

5919 W. 118th Street
Alsip, IL 60803

Tele: 708.388.9324
Fax: 708.388.9392

www.doralco.com

HORIZONTAL JOINT (1-1/2" JOINT OPTION)

TITLE:

CCRS - DRY JOINT RAIN SCREEN SYSTEM
2000 SERIES (1-1/2" JOINT)

PROJECT:

DRAWN BY:

JOB No:

CHECK BY:

DATE:

D-02A

SHEET No:

OF:

ENSURE THAT METAL STUDS ARE MIN 16 GA AND ARE SPACED NO MORE THAN 16" O.C. (NOT BY COMPOSITECORE)

SHEATHING
(NOT BY COMPOSITECORE)

WEATHER / MOISTURE BARRIER
(BITUMINOUS COATING SUGGESTED)
APPLIED TO FACE OF SUBSTRATE
(NOT BY COMPOSITECORE)

PLASTIC 'HORSESHOE STYLE' SHIMS AS
REQUIRED (NOT BY COMPOSITECORE)

EXTRUSION CLIP FIELD APPLIED
(SPACING PER INSTALL SCHEDULE)

WEEP HOLES W/ FOAM BAFFLES
2 PER PANEL

#12-14 DRIL-FLEX FASTENER
(ATTACHMENT SPACING PER
SCHEDULE)

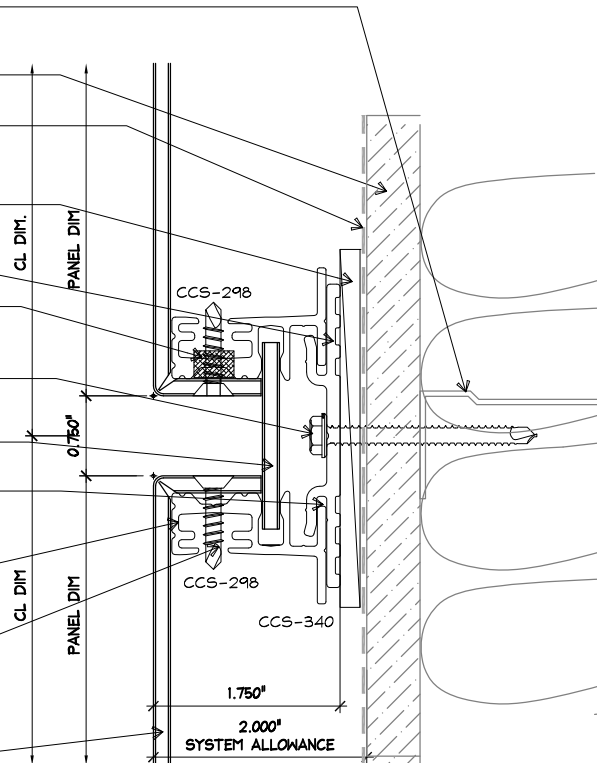
ALUMINUM COMPOSITE MATERIAL
JOINT FILLER STRIP

SLIDING CLIP ALLOWS FOR FASTENER
STUD LOCATION AND PANEL FREE
MOVEMENT

CCS EXTRUSION FACTORY APPLIED TO
PANEL

#10-16 X 3/4" PHILIPS FLAT HEAD
DRIL-FLEX
(SHOP APPLIED)

ALUMINUM COMPOSITE PANEL



COPYRIGHT COMPOSITEcore / DORALCO

COMPOSITEcore
'Architectural Cladding Systems'

A Division Of DORALCO - Architectural Metal Solutions

5919 W. 118th Street
Alsip, IL 60803

Tele: 708.388.9324
Fax: 708.388.9392

www.doralco.com

HORIZONTAL STARTING JOINT

TITLE:

CCRS - DRY JOINT RAIN SCREEN SYSTEM
1000 SERIES (3/4" JOINT)

PROJECT:

DRAWN BY:

JOB No:

CHECK BY:

DATE:

D-02B

SHEET No:

OF:

WEATHER / MOISTURE BARRIER
(BITUMINOUS COATING SUGGESTED)
APPLIED TO FACE OF SUBSTRATE
(NOT BY COMPOSITECORE)

SHEATHING
(NOT BY COMPOSITECORE)

SECONDARY FURRING SYSTEM LOCATED
AT HORIZONTAL OR VERTICAL PANEL
JOINTS (FURNISHED BY COMPOSITECORE
INSTALLED BY OTHERS) USE #12-14
DRIL-FLEX AT 16" O.C. FOR ATTACHMENT

#12-14 DRIL-FLEX FASTENER AT
FURRING @ 16" O.C. (ATTACHMENT
SPACING PER SCHEDULE)

PLASTIC 'HORSESHOE STYLE' SHIMS AS
REQUIRED (NOT BY COMPOSITECORE)

#10-16 X 3/8" PHILIPS FLAT HEAD
DRIL-FLEX COLOR MATCHED TO PANEL
FACTORY APPLIED

WEEP HOLES W/ FOAM BAFFLES
2 PER PANEL

ALUMINUM COMPOSITE MATERIAL
JOINT FILLER STRIP

CCS EXTRUSION FACTORY APPLIED TO
PANEL

SLIDING CLIP ALLOWS FOR FASTENER
STUD LOCATION AND PANEL FREE
MOVEMENT

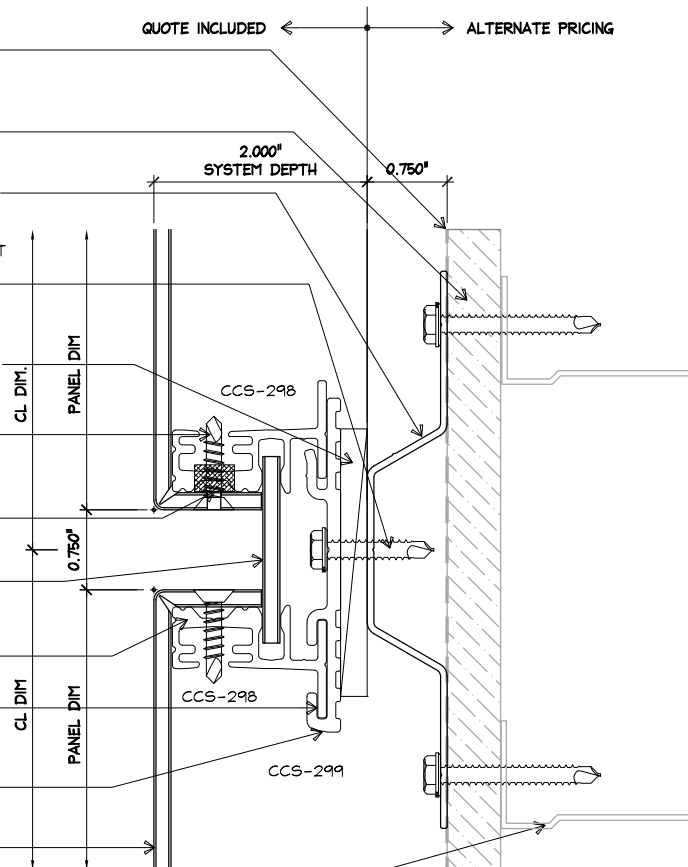
EXTRUSION CLIP FIELD APPLIED
(SPACING PER INSTALL SCHEDULE)

ALUMINUM COMPOSITE PANEL

ENSURE THAT METAL STUDS ARE MIN
16 GA AND ARE SPACED NO MORE
THAN 16" O.C. (ENG. BY OTHERS)

QUOTE INCLUDED

ALTERNATE PRICING



HAT CHANNEL (SHOWN) OR OPTIONAL 'Z'
FURRING IN 1/2", 3/4", 1", OR 1-1/2" DEPTHS

COPYRIGHT COMPOSITEcore / DORALCO

COMPOSITEcore
'Architectural Cladding Systems'

A Division Of DORALCO - Architectural Metal Solutions

5919 W. 118th Street
Alsip, IL 60803

Tele: 708.388.9324
Fax: 708.388.9392

www.doralco.com

TITLE:

HORIZONTAL JOINT
W/ ALTERNATE SECONDARY FURRING

PROJECT:

CCRS - DRY JOINT RAIN SCREEN SYSTEM
1000 SERIES (3/4" JOINT)

DRAWN BY:

JOB No:

CHECK BY:

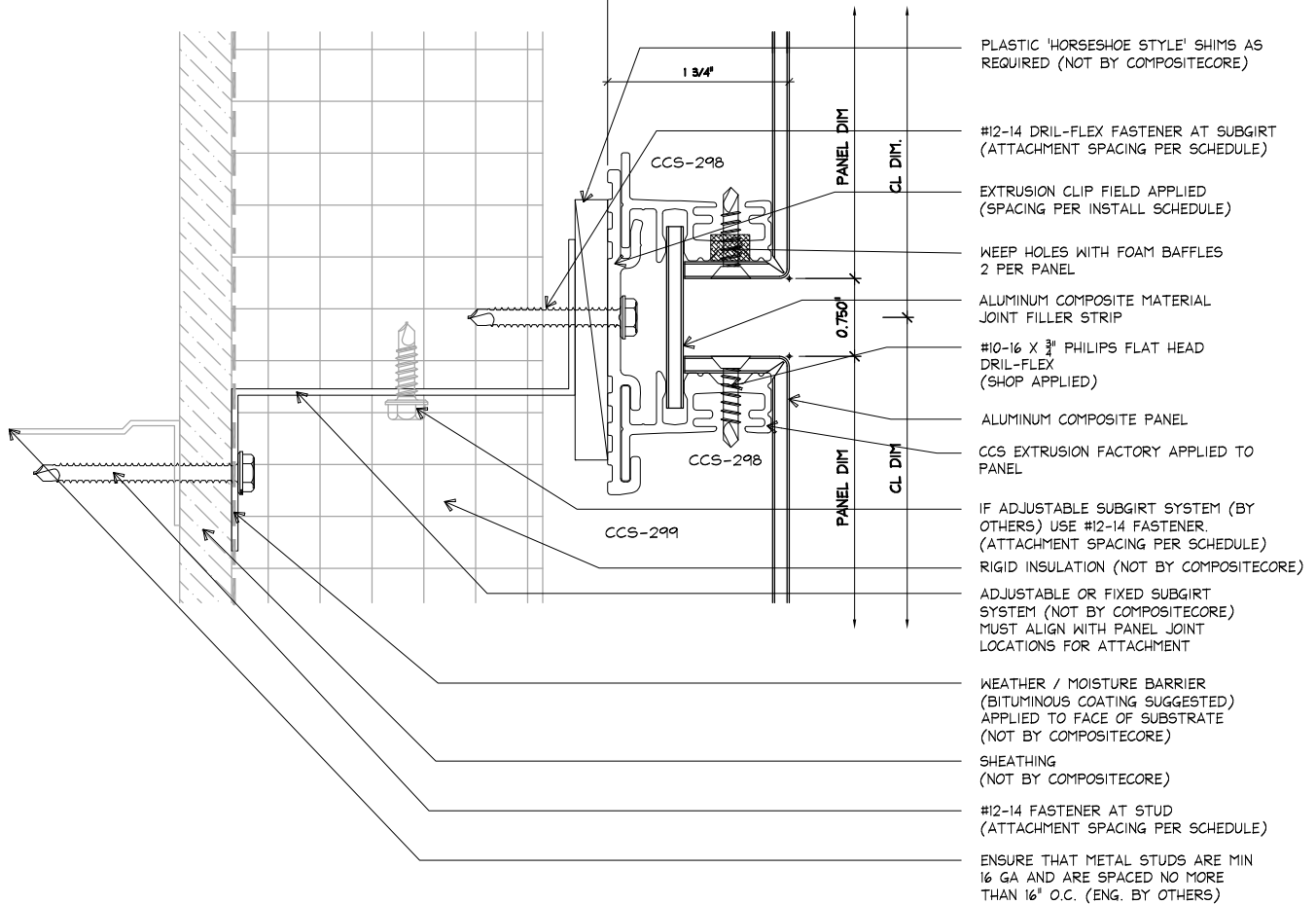
DATE:

D-02C

SHEET No:

OF:

ALTERNATE PRICING ← → QUOTE INCLUDED



COPYRIGHT COMPOSITEcore / DORALCO

COMPOSITEcore
'Architectural Cladding Systems'

A Division Of DORALCO - Architectural Metal Solutions
5919 W. 118th Street
Alsip, IL 60803
Tele: 708.388.9324
Fax: 708.388.9392

www.doralco.com

TITLE:

HORIZONTAL JOINT
W/ ALTERNATE SECONDARY FURRING

PROJECT:

CCRS - DRY JOINT RAIN SCREEN SYSTEM
1000 SERIES (3/4" JOINT)

DRAWN BY:

JOB No:

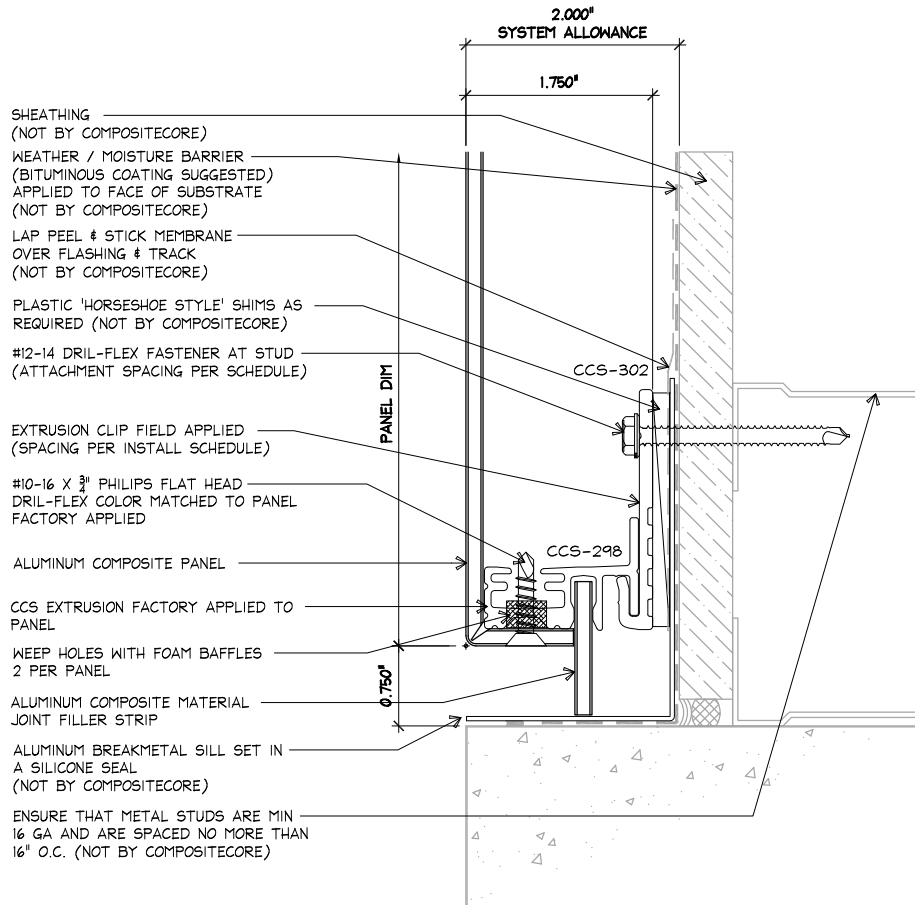
CHECK BY:

DATE:

D-02D

SHEET No:

OF:



COPYRIGHT COMPOSITEcore / DORALCO

COMPOSITEcore
'Architectural Cladding Systems'

A Division Of DORALCO - Architectural Metal Solutions

5919 W. 118th Street
Alsip, IL 60803

Tele: 708.388.9324
Fax: 708.388.9392

www.doralco.com

BASE / STARTER

TITLE:

CCRS - DRY JOINT RAIN SCREEN SYSTEM
1000 SERIES (3/4" JOINT)

PROJECT:

DRAWN BY:

JOB No:

CHECK BY:

DATE:

D-03

SHEET No:

OF:

ENSURE THAT METAL STUDS ARE MIN 16 GA AND ARE SPACED NO MORE THAN 16" O.C. (NOT BY COMPOSITECORE)

NAILABLE SUBSTRATE
(NOT BY COMPOSITECORE)

WEATHER / MOISTURE BARRIER
(BITUMINOUS COATING SUGGESTED)
APPLIED TO FACE OF SUBSTRATE
(NOT BY COMPOSITECORE)

LAP PEEL & STICK MEMBRANE
OVER FLASHING & TRACK
(NOT BY COMPOSITECORE)

PLASTIC 'HORSESHOE STYLE' SHIMS AS
REQUIRED (NOT BY COMPOSITECORE)

#12-14 DRIL-FLEX FASTENER
(ATTACHMENT SPACING PER
SCHEDULE)

EXTRUSION CLIP FIELD APPLIED
(SPACING PER INSTALL SCHEDULE)

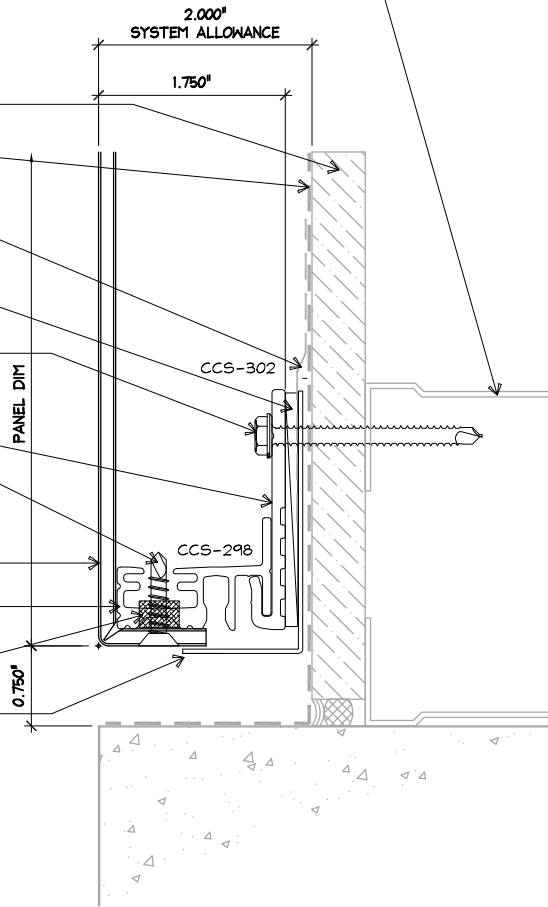
#10-16 X 3/8" PHILIPS FLAT HEAD
DRIL-FLEX COLOR MATCHED TO PANEL
FACTORY APPLIED

ALUMINUM COMPOSITE PANEL

CCS EXTRUSION FACTORY APPLIED TO
PANEL

WEEP HOLES WITH FOAM BAFFLES
2 PER PANEL

ALUMINUM BREAKMETAL SILL
(NOT BY COMPOSITECORE)



COPYRIGHT COMPOSITEcore / DORALCO

COMPOSITEcore
'Architectural Cladding Systems'

A Division Of DORALCO - Architectural Metal Solutions

5919 W. 118th Street
Alsip, IL 60803

Tele: 708.388.9324
Fax: 708.388.9392

www.doralco.com

BASE / STARTER (ALTERNATE A)

TITLE:

CCRS - DRY JOINT RAIN SCREEN SYSTEM
1000 SERIES (3/4" JOINT)

PROJECT:

DRAWN BY:

JOB No:

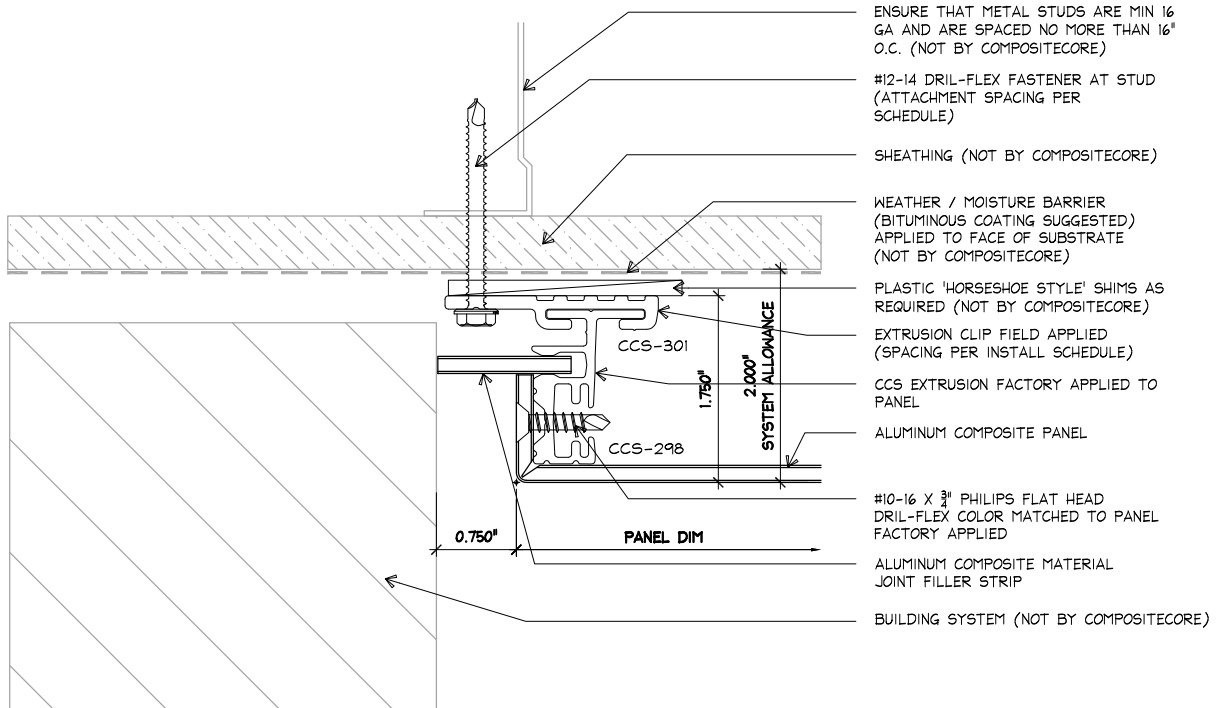
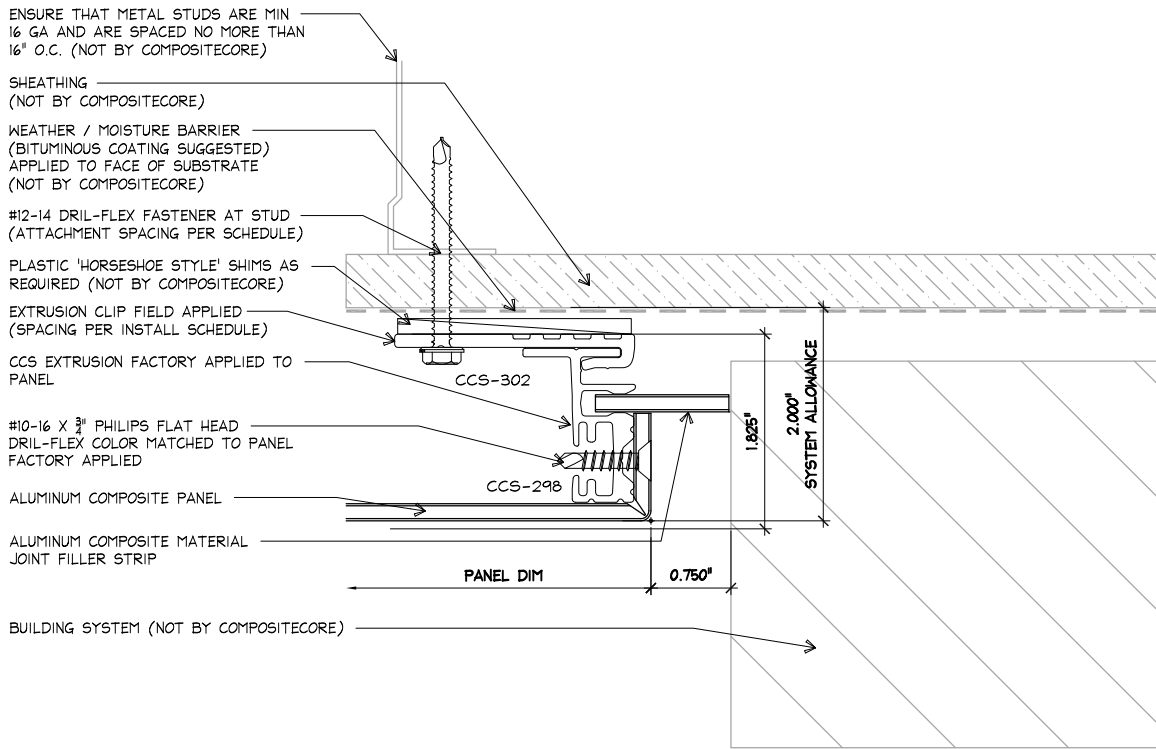
CHECK BY:

DATE:

D-03A

SHEET No:

OF:



COPYRIGHT COMPOSITEcore / DORALCO

COMPOSITEcore
'Architectural Cladding Systems'

A Division Of DORALCO - Architectural Metal Solutions
5919 W. 118th Street
Alsip, IL 60803
Tele: 708.388.9324
Fax: 708.388.9392

www.doralco.com

ABUTMENT JOINT

TITLE:

CCRS - DRY JOINT RAIN SCREEN SYSTEM
1000 SERIES (3/4" JOINT)

PROJECT:

DRAWN BY:

JOB No:

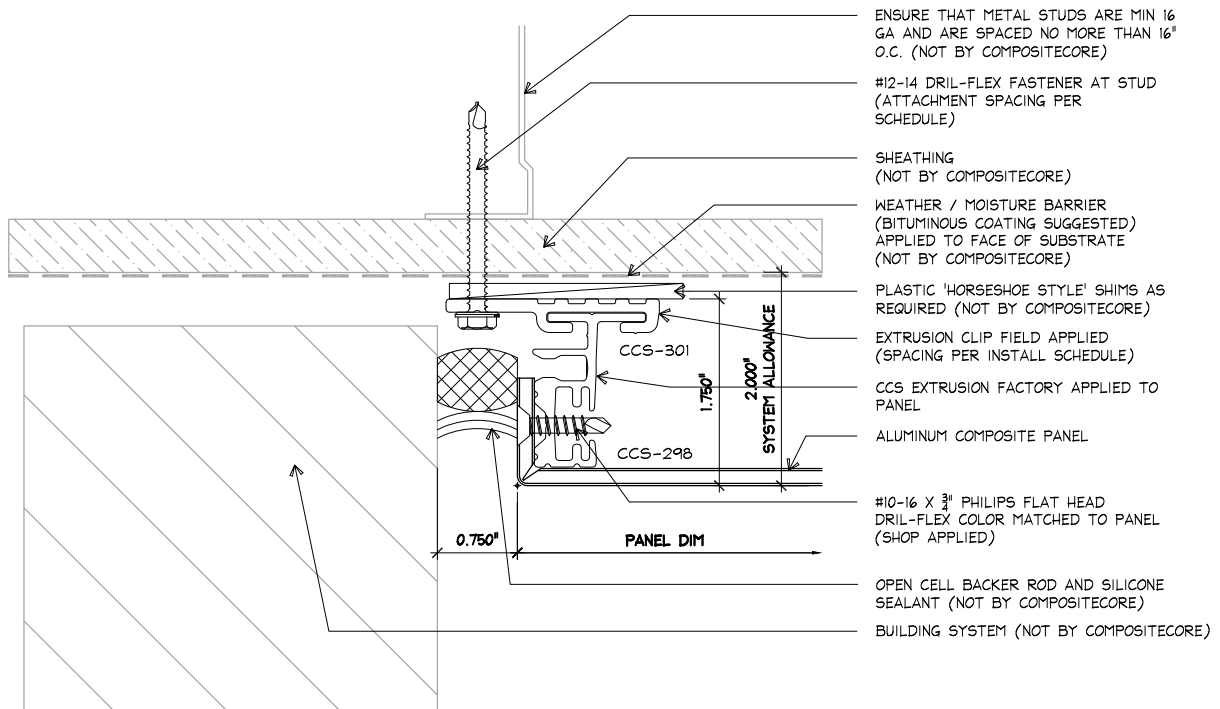
CHECK BY:

DATE:

D-04

SHEET No:

OF:



COPYRIGHT COMPOSITEcore / DORALCO

COMPOSITEcore
'Architectural Cladding Systems'

A Division Of DORALCO - Architectural Metal Solutions
5919 W. 118th Street
Alsip, IL 60803
Tele: 708.388.9324
Fax: 708.388.9392

www.doralco.com

ABUTMENT JOINT (ALTERNATE)

TITLE:

CCRS - DRY JOINT RAIN SCREEN SYSTEM
1000 SERIES (3/4" JOINT)

PROJECT:

DRAWN BY:

JOB No:

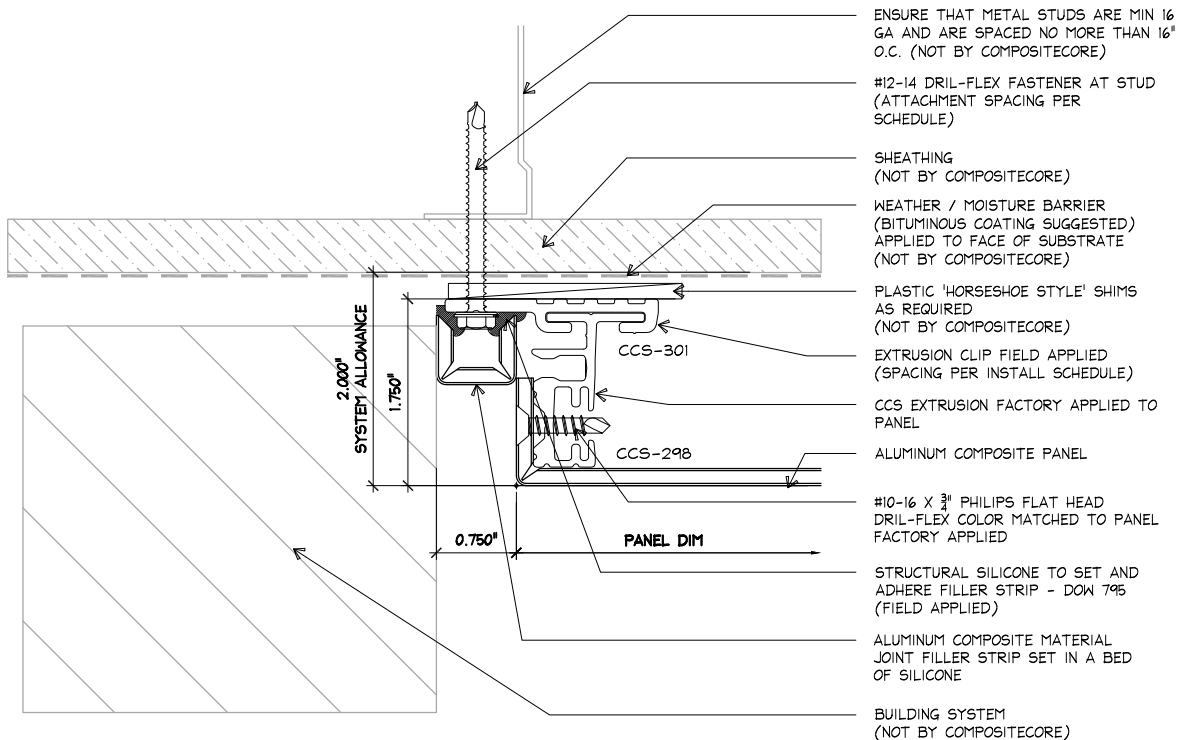
CHECK BY:

DATE:

D-04A

SHEET No:

OF:



COPYRIGHT COMPOSITEcore / DORALCO

COMPOSITEcore
'Architectural Cladding Systems'

A Division Of DORALCO - Architectural Metal Solutions

5919 W. 118th Street
Alsip, IL 60803

Tele: 708.388.9324
Fax: 708.388.9392

www.doralco.com

ABUTMENT JOINT (ALTERNATE)

TITLE:

CCRS - DRY JOINT RAIN SCREEN SYSTEM
1000 SERIES (3/4\" JOINT)

PROJECT:

DRAWN BY:

JOB No:

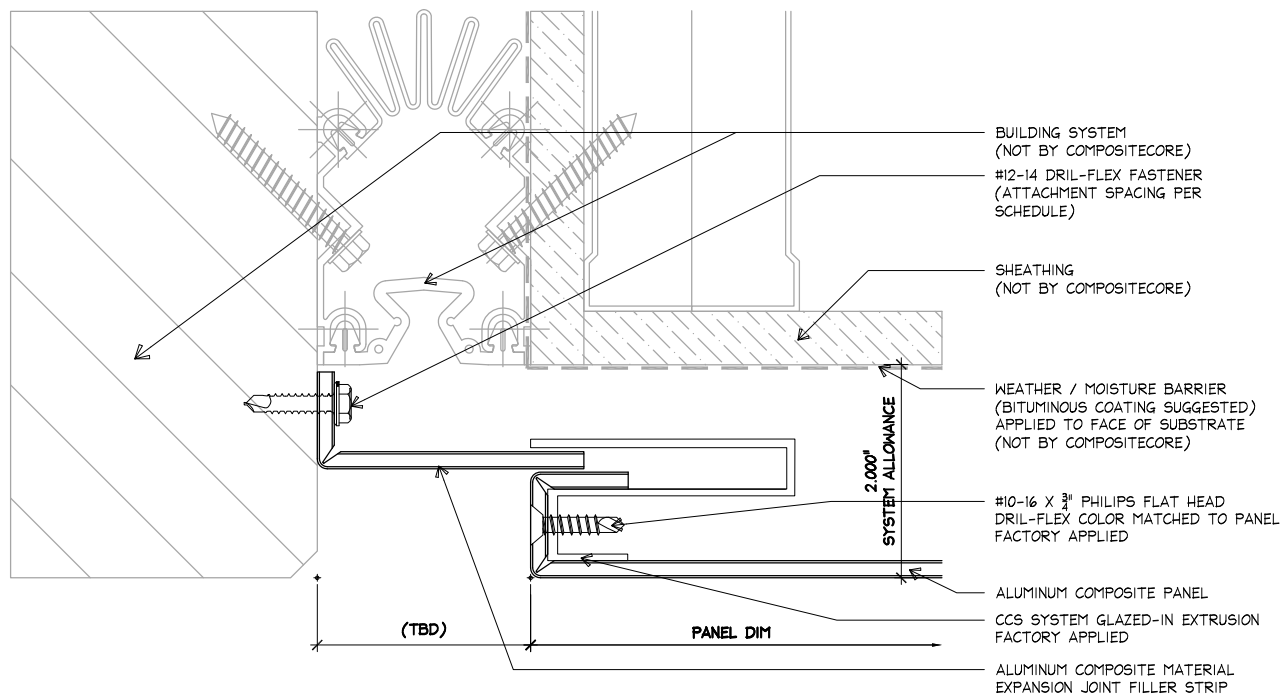
CHECK BY:

DATE:

D-04B

SHEET No:

OF:



COPYRIGHT COMPOSITEcore / DORALCO

COMPOSITEcore
'Architectural Cladding Systems'

A Division Of DORALCO - Architectural Metal Solutions
5919 W. 118th Street Tele: 708.388.9324
Alsip, IL 60803 Fax: 708.388.9392

www.doralco.com

EXPANSION JOINT

TITLE:

CCRS - DRY JOINT RAIN SCREEN SYSTEM
1000 SERIES (3/4" JOINT)

PROJECT:

DRAWN BY:

JOB No:

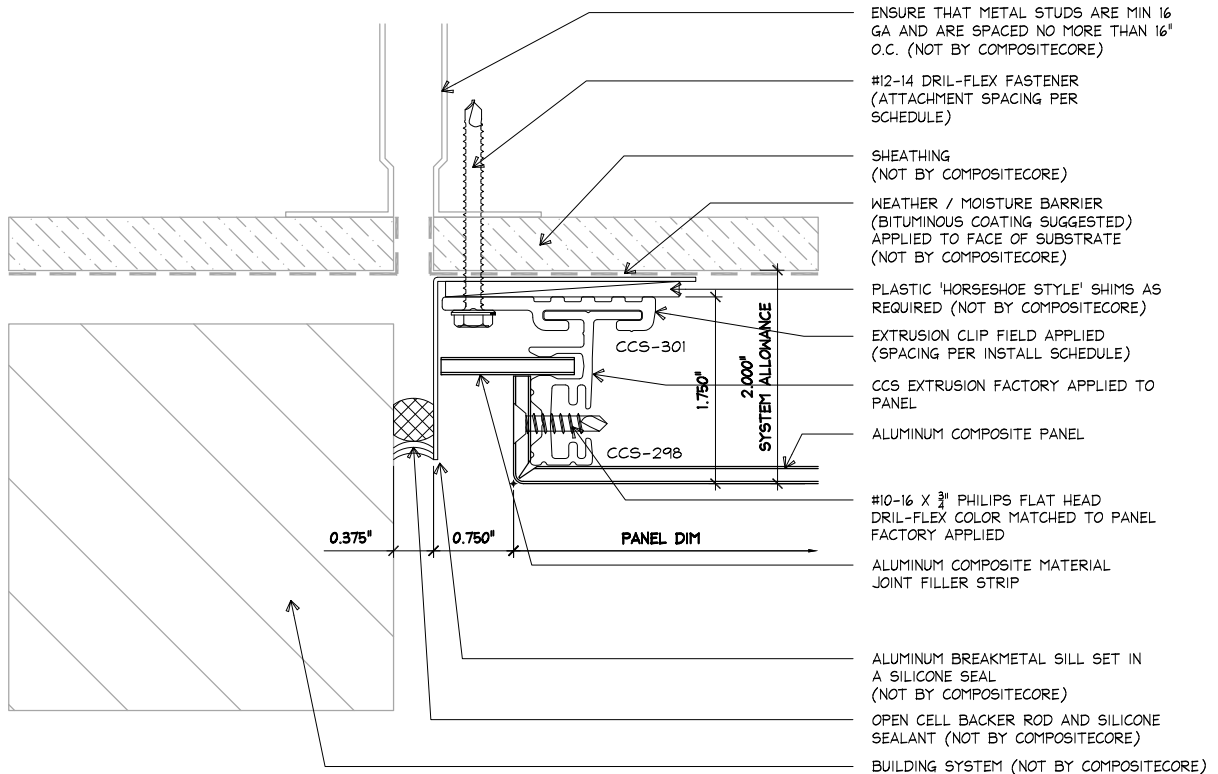
CHECK BY:

DATE:

D-05

SHEET No:

OF:



COPYRIGHT COMPOSITEcore / DORALCO

COMPOSITEcore
'Architectural Cladding Systems'

A Division Of DORALCO - Architectural Metal Solutions
5919 W. 118th Street
Alsip, IL 60803
Tele: 708.388.9324
Fax: 708.388.9392

www.doralco.com

CONTROL JOINT

TITLE:

CCRS - DRY JOINT RAIN SCREEN SYSTEM
1000 SERIES (3/4" JOINT)

PROJECT:

DRAWN BY:

JOB No:

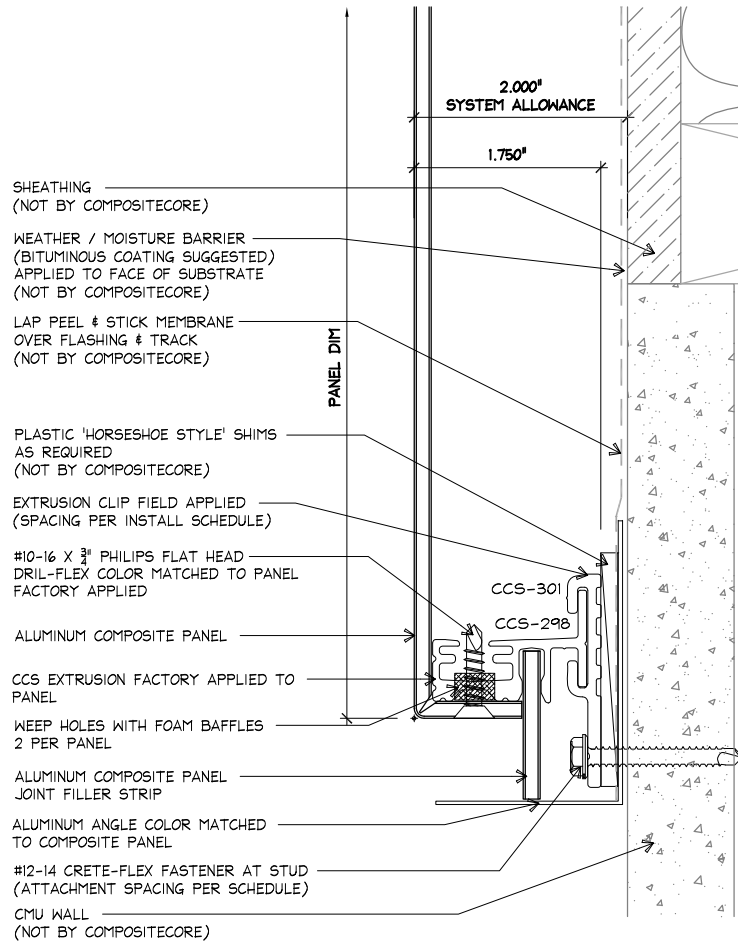
CHECK BY:

DATE:

D-06

SHEET No:

OF:



COPYRIGHT COMPOSITEcore / DORALCO

COMPOSITEcore
'Architectural Cladding Systems'

A Division Of DORALCO - Architectural Metal Solutions

5919 W. 118th Street
Alsip, IL 60803

Tele: 708.388.9324
Fax: 708.388.9392

www.doralco.com

CLOSURE DETAIL

TITLE:

CCRS - DRY JOINT RAIN SCREEN SYSTEM
1000 SERIES (3/4" JOINT)

PROJECT:

DRAWN BY:

JOB No:

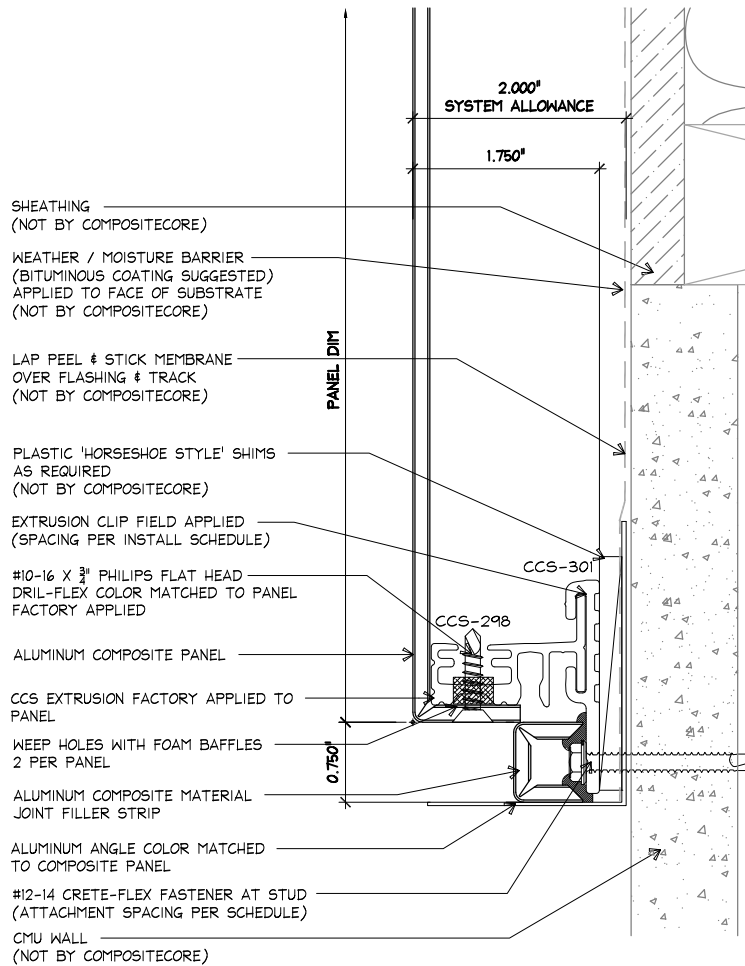
CHECK BY:

DATE:

D-07

SHEET No:

OF:



COPYRIGHT COMPOSITEcore / DORALCO

COMPOSITEcore
'Architectural Cladding Systems'

A Division Of DORALCO - Architectural Metal Solutions

5919 W. 118th Street
Alsip, IL 60803

Tele: 708.388.9324
Fax: 708.388.9392

www.doralco.com

CLOSURE DETAIL (ALTERNATE)

TITLE:

CCRS - DRY JOINT RAIN SCREEN SYSTEM
1000 SERIES (3/4" JOINT)

PROJECT:

DRAWN BY:

JOB No:

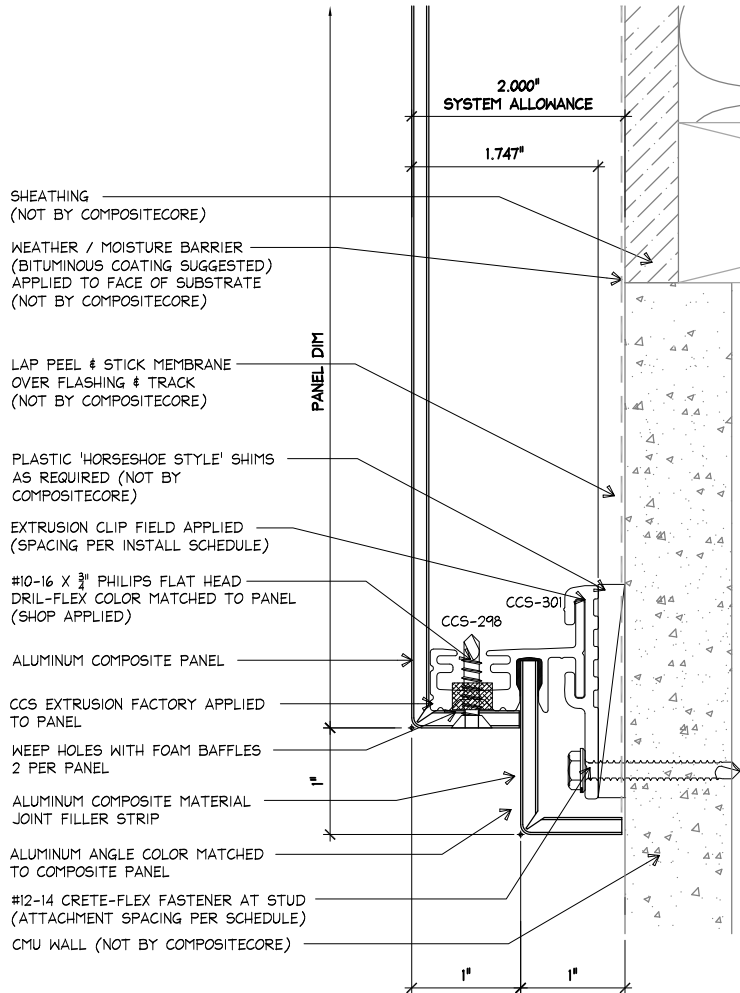
CHECK BY:

DATE:

D-07A

SHEET No:

OF:



COPYRIGHT COMPOSITEcore / DORALCO

COMPOSITEcore
'Architectural Cladding Systems'

A Division Of DORALCO - Architectural Metal Solutions

5919 W. 118th Street
 Alsip, IL 60803

Tele: 708.388.9324
 Fax: 708.388.9392

www.doralco.com

CLOSURE DETAIL (ALTERNATE)

TITLE:

CCRS - DRY JOINT RAIN SCREEN SYSTEM
 1000 SERIES (3/4" JOINT)

PROJECT:

DRAWN BY:

JOB No:

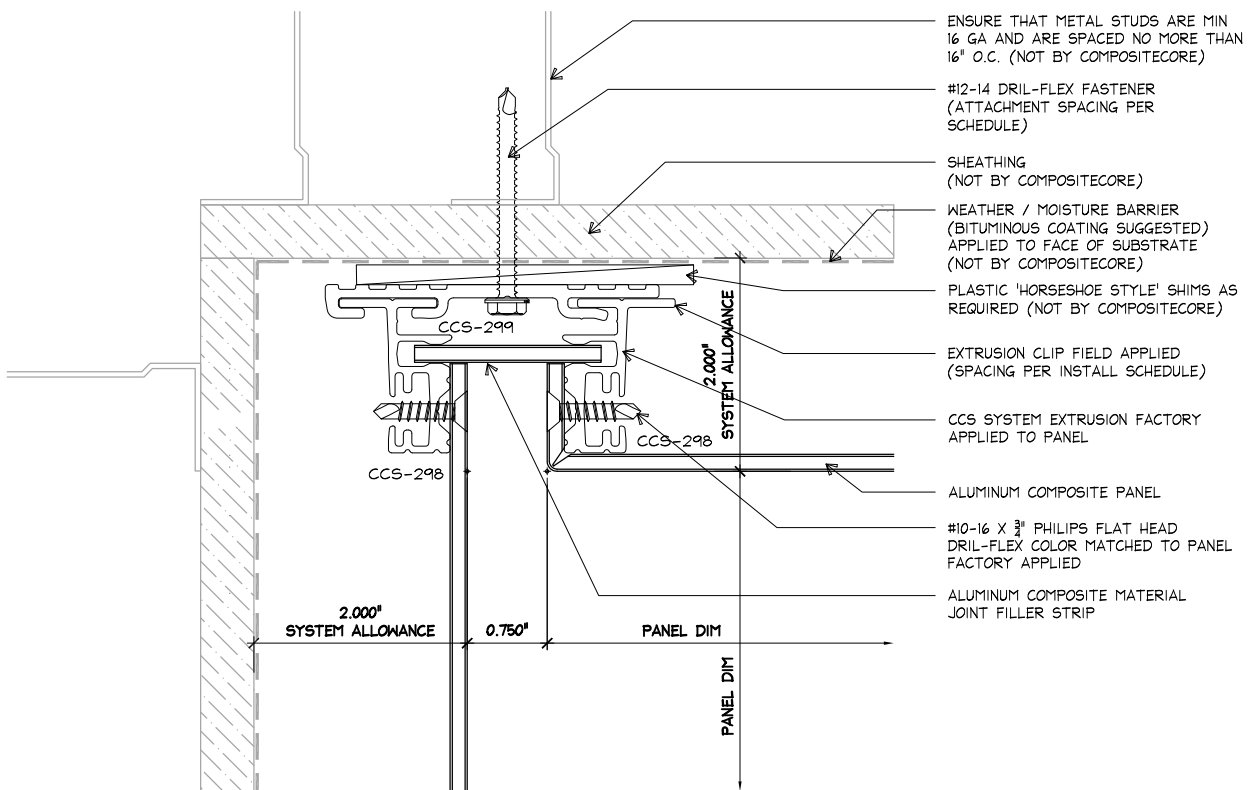
CHECK BY:

DATE:

D-07B

SHEET No:

OF:



COPYRIGHT COMPOSITEcore / DORALCO

COMPOSITEcore
'Architectural Cladding Systems'

A Division Of DORALCO - Architectural Metal Solutions
 5919 W. 118th Street Tele: 708.388.9324
 Alsip, IL 60803 Fax: 708.388.9392

www.doralco.com

TITLE:

INSIDE CORNER (90 DEG)

PROJECT:

CCRS - DRY JOINT RAIN SCREEN SYSTEM
 1000 SERIES (3/4" JOINT)

DRAWN BY:

JOB No:

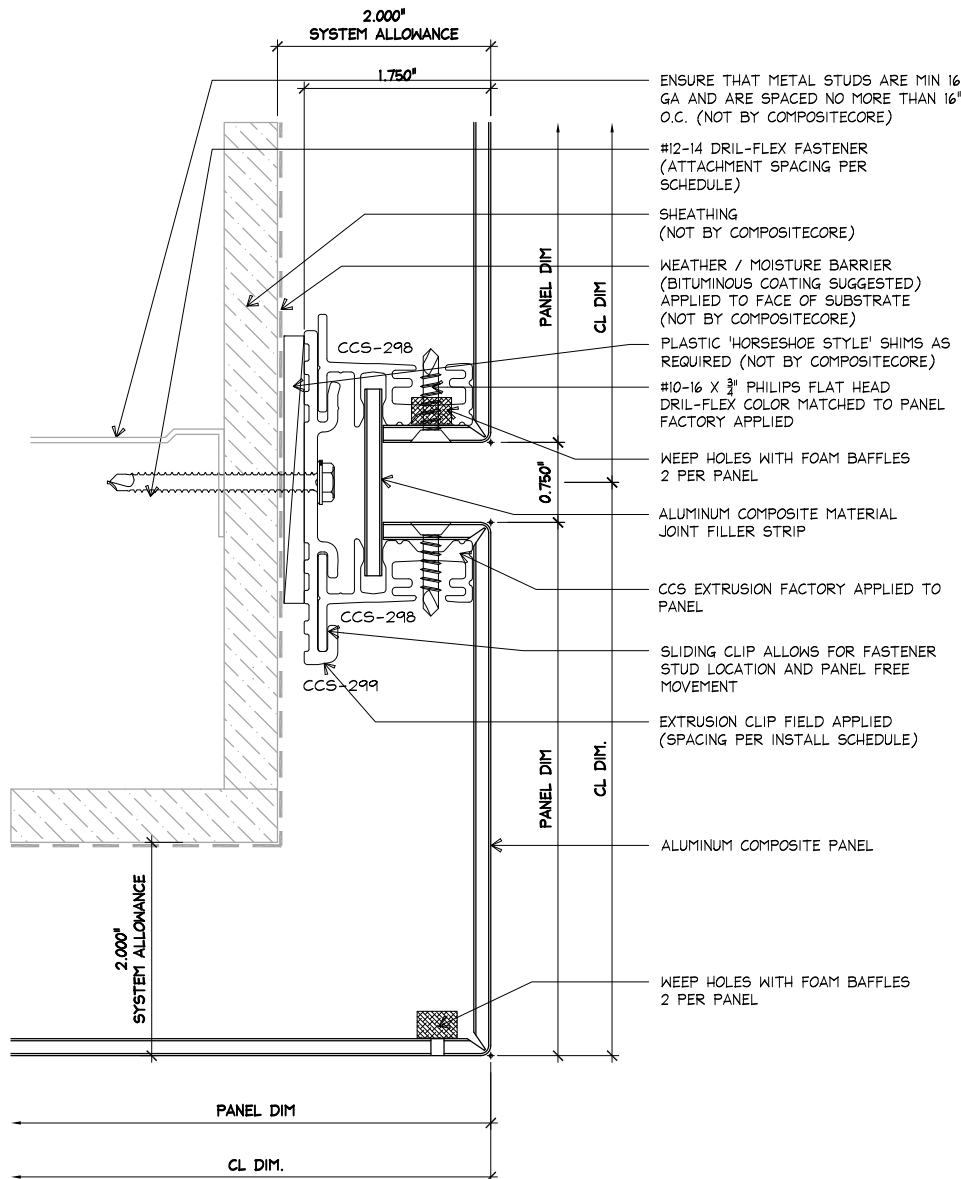
CHECK BY:

DATE:

D-08

SHEET No:

OF:



COPYRIGHT COMPOSITEcore / DORALCO

COMPOSITEcore
'Architectural Cladding Systems'

A Division Of DORALCO - Architectural Metal Solutions
5919 W. 118th Street Tele: 708.388.9324
Alsip, IL 60803 Fax: 708.388.9392

www.doralco.com

SOFFIT JOINT

TITLE:

CCRS - DRY JOINT RAIN SCREEN SYSTEM
1000 SERIES (3/4\" JOINT)

PROJECT:

DRAWN BY:

JOB No:

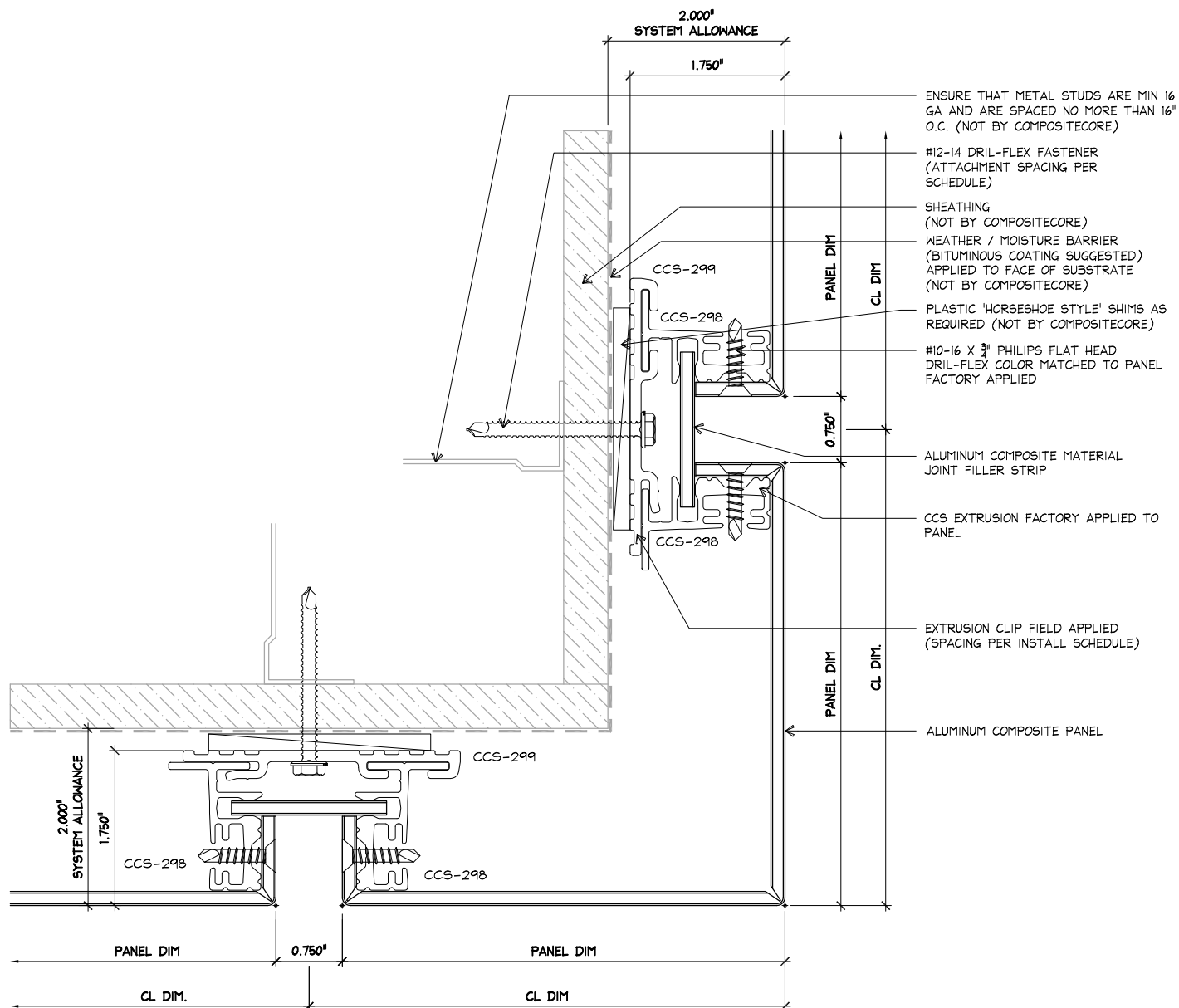
CHECK BY:

DATE:

D-09

SHEET No:

OF:



COPYRIGHT COMPOSITEcore / DORALCO

COMPOSITEcore
'Architectural Cladding Systems'

A Division Of DORALCO - Architectural Metal Solutions
5919 W. 118th Street
Alsip, IL 60803
Tele: 708.388.9324
Fax: 708.388.9392

www.doralco.com

OUTSIDE CORNER

TITLE:

CCRS - DRY JOINT RAIN SCREEN SYSTEM
1000 SERIES (3/4" JOINT)

PROJECT:

DRAWN BY:

JOB No:

CHECK BY:

DATE:

D-10

SHEET No:

OF:

NOT USED

COPYRIGHT COMPOSITEcore / DORALCO

COMPOSITEcore
'Architectural Cladding Systems'

A Division Of DORALCO - Architectural Metal Solutions
5919 W. 118th Street Tele: 708.388.9324
Alsip, IL 60803 Fax: 708.388.9392
www.doralco.com

TITLE:

CCRS - DRY JOINT RAIN SCREEN SYSTEM
1000 SERIES (3/4" JOINT)

PROJECT:

DRAWN BY:

JOB No:

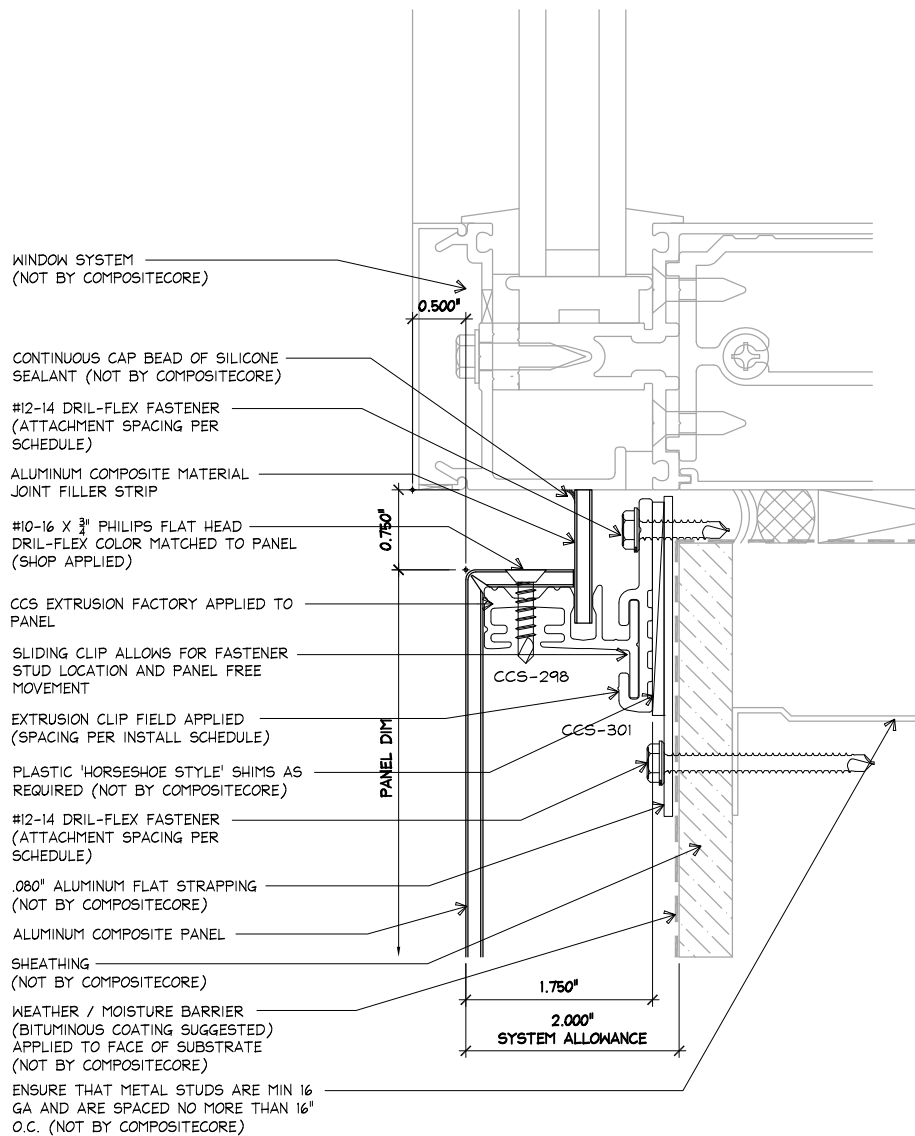
CHECK BY:

DATE:

D-11

SHEET No:

OF:



COPYRIGHT COMPOSITEcore / DORALCO

COMPOSITEcore
'Architectural Cladding Systems'

A Division Of DORALCO - Architectural Metal Solutions

5919 W. 118th Street
Alsip, IL 60803

Tele: 708.388.9324
Fax: 708.388.9392

www.doralco.com

WINDOW SILL

TITLE:

CCRS - DRY JOINT RAIN SCREEN SYSTEM
1000 SERIES (3/4" JOINT)

PROJECT:

DRAWN BY:

JOB No:

CHECK BY:

DATE:

D-12

SHEET No:

OF:

ENSURE THAT METAL STUDS ARE MIN
16 GA AND ARE SPACED NO MORE THAN
16" O.C. (NOT BY COMPOSITECORE)

SHEATHING
(NOT BY COMPOSITECORE)

WEATHER / MOISTURE BARRIER
(BITUMINOUS COATING SUGGESTED)
APPLIED TO FACE OF SUBSTRATE
(NOT BY COMPOSITECORE)

ALUMINUM COMPOSITE PANEL
#12-14 DRIL-FLEX FASTENER
(ATTACHMENT SPACING PER
SCHEDULE)

PLASTIC 'HORSESHOE STYLE' SHIMS AS
REQUIRED (NOT BY COMPOSITECORE)

EXTRUSION CLIP FIELD APPLIED
(SPACING PER INSTALL SCHEDULE)

CCS EXTRUSION FACTORY APPLIED TO
PANEL

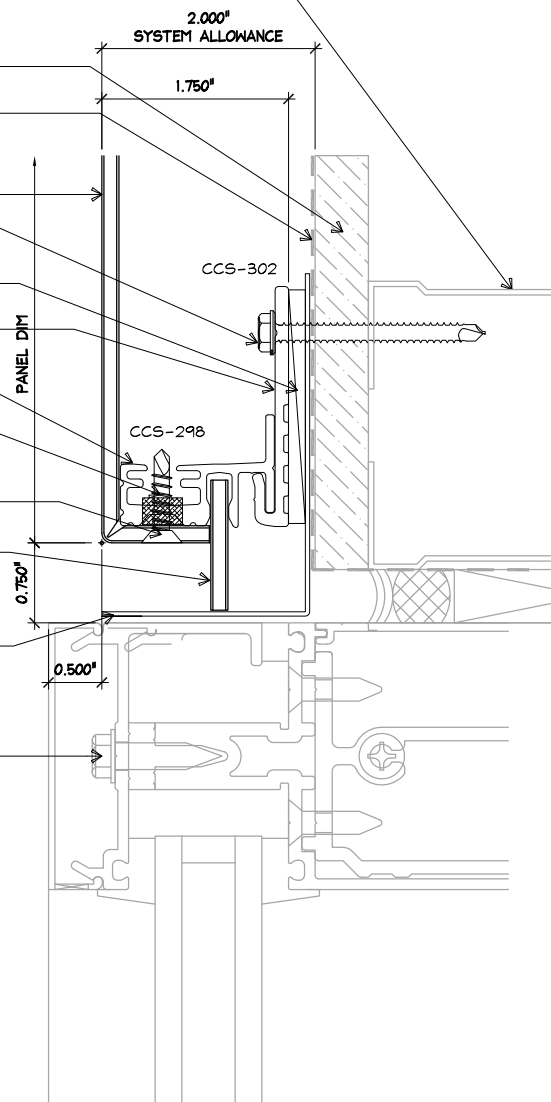
#10-16 X 3/8" PHILIPS FLAT HEAD
DRIL-FLEX COLOR MATCHED TO PANEL
FACTORY APPLIED

KEEP HOLES WITH FOAM BAFFLES
2 PER PANEL

ALUMINUM COMPOSITE MATERIAL
JOINT FILLER STRIP

ALUMINUM BREAKMETAL SILL SET IN
A SILICONE SEAL
(NOT BY COMPOSITECORE)

WINDOW SYSTEM
(NOT BY COMPOSITECORE)



COPYRIGHT COMPOSITEcore / DORALCO

COMPOSITEcore
'Architectural Cladding Systems'

A Division Of DORALCO - Architectural Metal Solutions

5919 W. 118th Street
Alsip, IL 60803

Tele: 708.388.9324
Fax: 708.388.9392

www.doralco.com

WINDOW HEAD

TITLE:

CCRS - DRY JOINT RAIN SCREEN SYSTEM
1000 SERIES (3/4" JOINT)

PROJECT:

DRAWN BY:

JOB No:

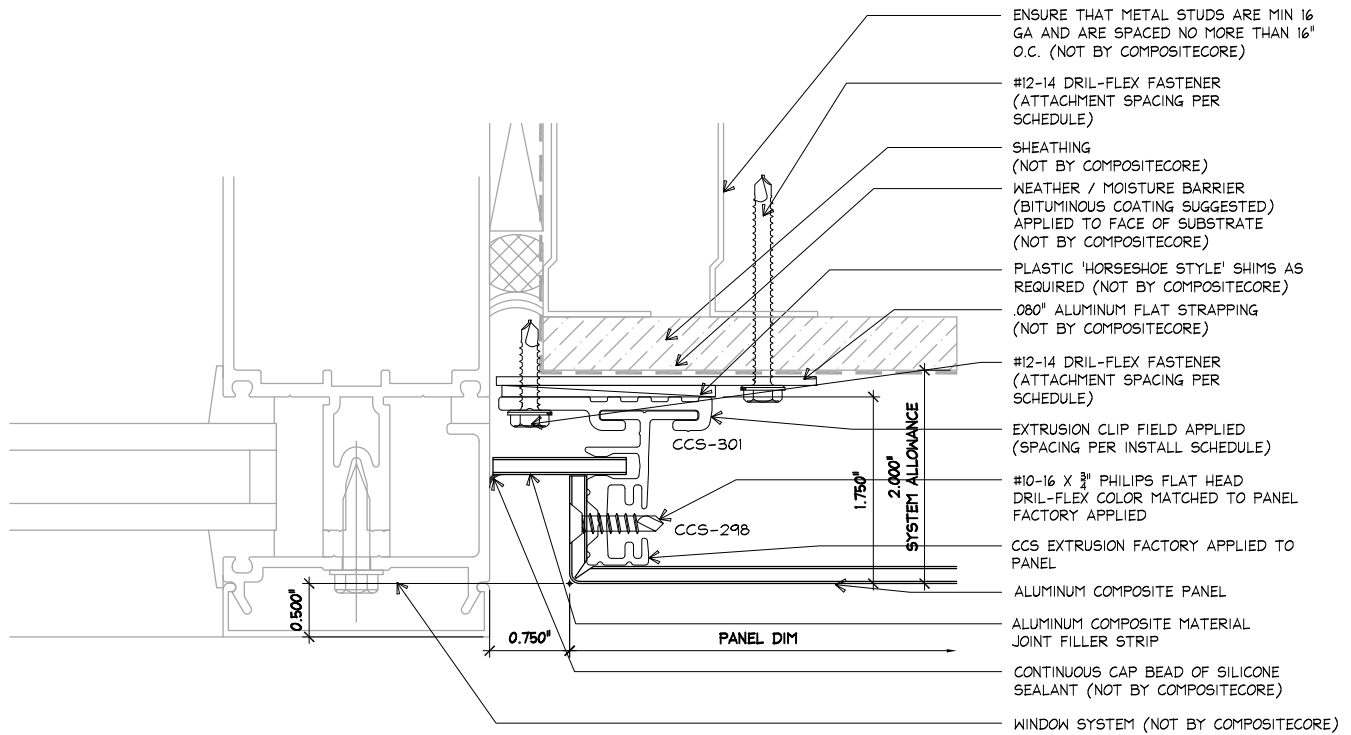
CHECK BY:

DATE:

D-13

SHEET No:

OF:



ENSURE THAT METAL STUDS ARE MIN 16 GA AND ARE SPACED NO MORE THAN 16" O.C. (NOT BY COMPOSITECORE)

#12-14 DRIL-FLEX FASTENER (ATTACHMENT SPACING PER SCHEDULE)

SHEATHING (NOT BY COMPOSITECORE)

WEATHER / MOISTURE BARRIER (BITUMINOUS COATING SUGGESTED) APPLIED TO FACE OF SUBSTRATE (NOT BY COMPOSITECORE)

PLASTIC 'HORSESHOE STYLE' SHIMS AS REQUIRED (NOT BY COMPOSITECORE)

#12-14 DRIL-FLEX FASTENER (ATTACHMENT SPACING PER SCHEDULE)

EXTRUSION CLIP FIELD APPLIED (SPACING PER INSTALL SCHEDULE)

#10-16 X 3/8" PHILIPS FLAT HEAD DRIL-FLEX COLOR MATCHED TO PANEL FACTORY APPLIED

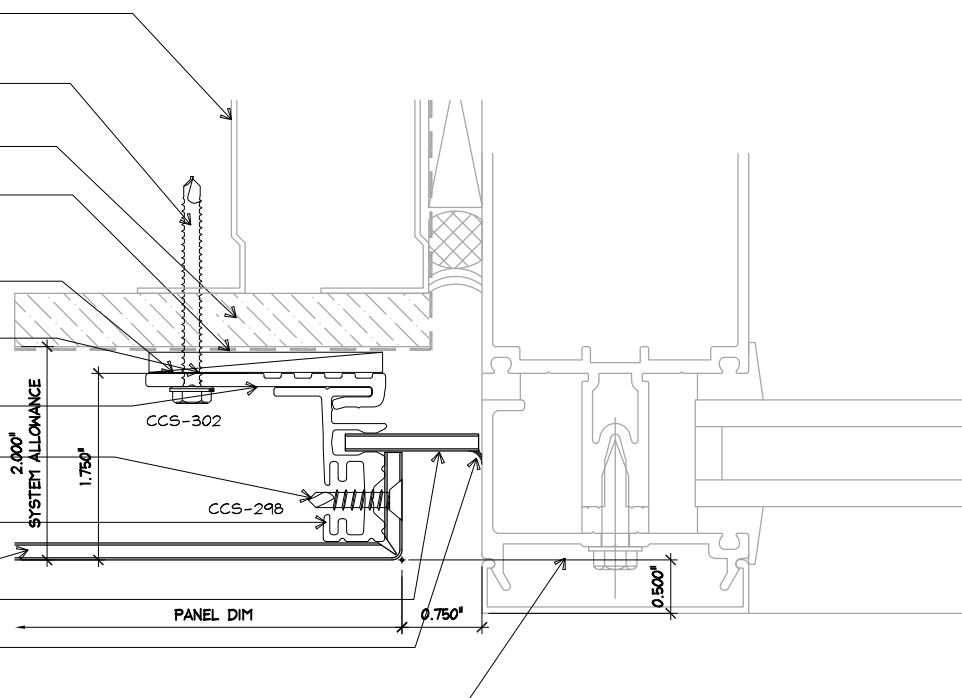
CCS EXTRUSION FACTORY APPLIED TO PANEL

ALUMINUM COMPOSITE PANEL

ALUMINUM COMPOSITE MATERIAL JOINT FILLER STRIP

CONTINUOUS CAP BEAD OF SILICONE SEALANT (NOT BY COMPOSITECORE)

WINDOW SYSTEM (NOT BY COMPOSITECORE)



COPYRIGHT COMPOSITECORE / DORALCO

COMPOSITEcore
'Architectural Cladding Systems'

A Division Of DORALCO - Architectural Metal Solutions

5919 W. 118th Street
Alsip, IL 60803

Tele: 708.388.9324
Fax: 708.388.9392

www.doralco.com

WINDOW JAMB

TITLE:

CCRS - DRY JOINT RAIN SCREEN SYSTEM
1000 SERIES (3/4" JOINT)

PROJECT:

DRAWN BY:

JOB No:

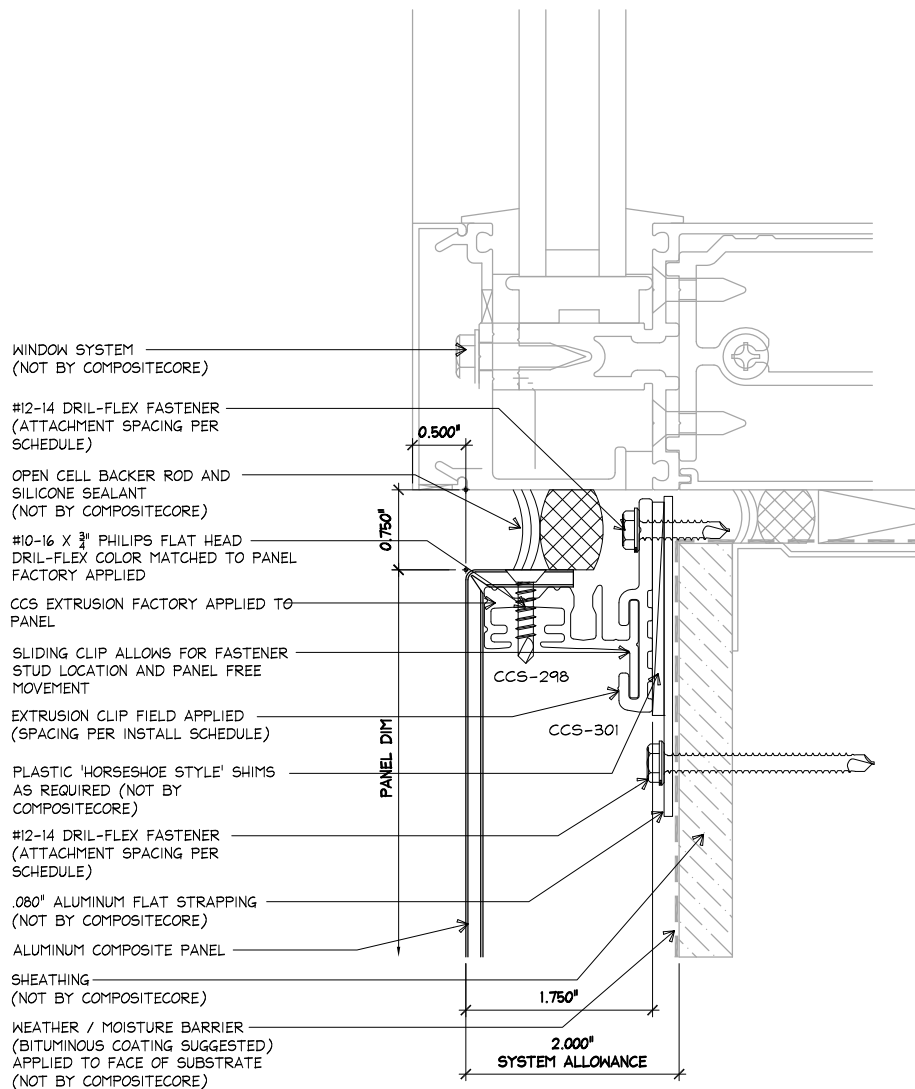
CHECK BY:

DATE:

D-14

SHEET No:

OF:



COPYRIGHT COMPOSITEcore / DORALCO

COMPOSITEcore
'Architectural Cladding Systems'

A Division Of DORALCO - Architectural Metal Solutions

5919 W. 118th Street
Alsip, IL 60803

Tele: 708.388.9324
Fax: 708.388.9392

www.doralco.com

WINDOW SILL (ALTERNATE A)

TITLE:

CCRS - DRY JOINT RAIN SCREEN SYSTEM
1000 SERIES (3/4" JOINT)

PROJECT:

DRAWN BY:

JOB No:

CHECK BY:

DATE:

D-15

SHEET No:

OF:

ENSURE THAT METAL STUDS ARE MIN 16 GA AND ARE SPACED NO MORE THAN 16" O.C. (NOT BY COMPOSITECORE)

SHEATHING (NOT BY COMPOSITECORE)

WEATHER / MOISTURE BARRIER (BITUMINOUS COATING SUGGESTED) APPLIED TO FACE OF SUBSTRATE (NOT BY COMPOSITECORE)

ALUMINUM COMPOSITE PANEL

#12-14 DRIL-FLEX FASTENER (ATTACHMENT SPACING PER SCHEDULE)

PLASTIC 'HORSESHOE STYLE' SHIMS AS REQUIRED (NOT BY COMPOSITECORE)

EXTRUSION CLIP FIELD APPLIED (SPACING PER INSTALL SCHEDULE)

CCS EXTRUSION FACTORY APPLIED TO PANEL

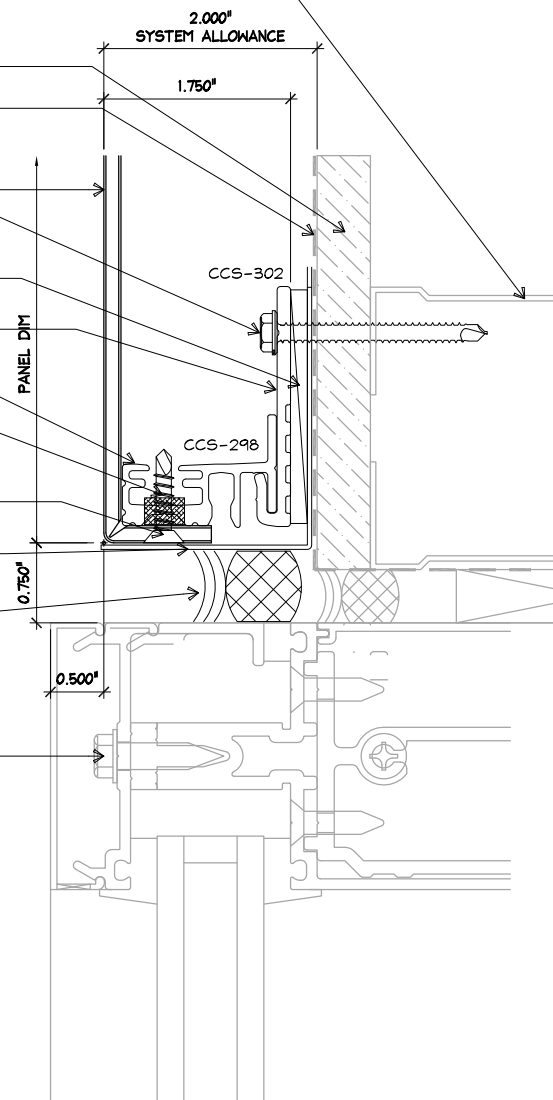
#10-16 X 3/8" PHILIPS FLAT HEAD DRIL-FLEX COLOR MATCHED TO PANEL (SHOP APPLIED)

KEEP HOLES W/ FOAM BAFFLES 2 PER PANEL

0.080 ALUMINUM BREAKMETAL SILL (NOT BY COMPOSITECORE)

OPEN CELL BACKER ROD AND SILICONE SEALANT (NOT BY COMPOSITECORE)

WINDOW SYSTEM (NOT BY COMPOSITECORE)



COPYRIGHT COMPOSITEcore / DORALCO

COMPOSITEcore
'Architectural Cladding Systems'

A Division Of DORALCO - Architectural Metal Solutions

5919 W. 118th Street
Alsip, IL 60803

Tele: 708.388.9324
Fax: 708.388.9392

www.doralco.com

WINDOW HEAD (ALTERNATE A)

TITLE:

CCRS - DRY JOINT RAIN SCREEN SYSTEM
1000 SERIES (3/4" JOINT)

PROJECT:

DRAWN BY:

JOB No:

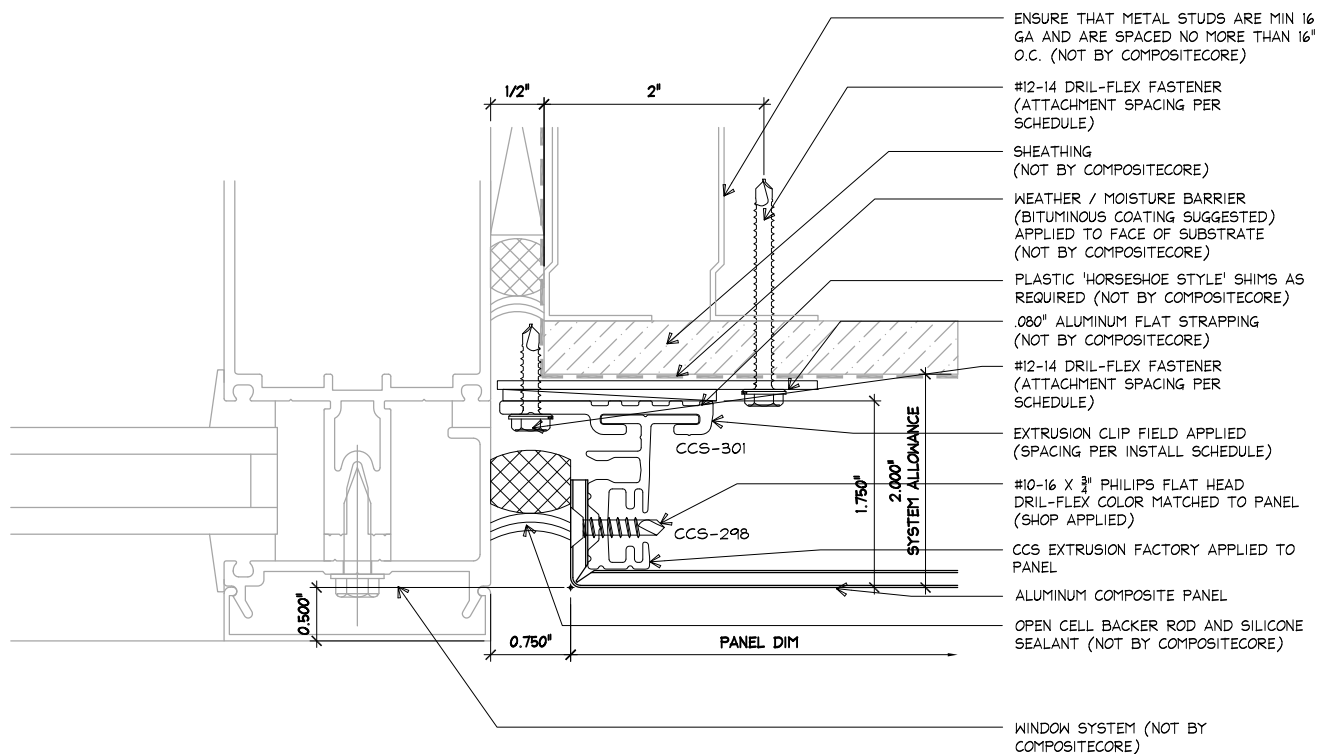
CHECK BY:

DATE:

D-16

SHEET No:

OF:



ENSURE THAT METAL STUDS ARE MIN 16 GA AND ARE SPACED NO MORE THAN 16\" O.C. (NOT BY COMPOSITECORE)

SHEATHING (NOT BY COMPOSITECORE)

WEATHER / MOISTURE BARRIER (BITUMINOUS COATING SUGGESTED) APPLIED TO FACE OF SUBSTRATE (NOT BY COMPOSITECORE)

PLASTIC 'HORSESHOE STYLE' SHIMS AS REQUIRED (NOT BY COMPOSITECORE)

#12-14 DRIL-FLEX FASTENER (ATTACHMENT SPACING PER SCHEDULE)

EXTRUSION CLIP FIELD APPLIED (SPACING PER INSTALL SCHEDULE)

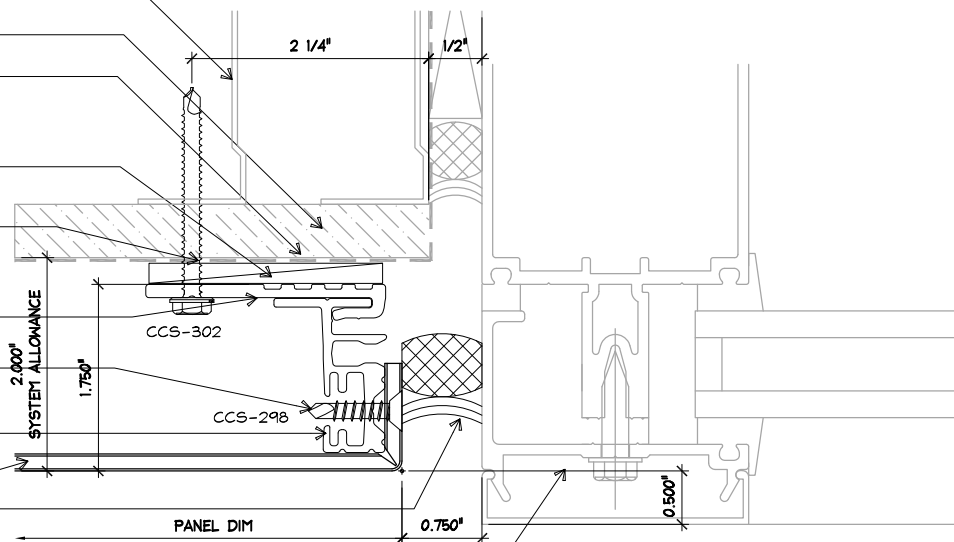
#10-16 X 3/8\" PHILIPS FLAT HEAD DRIL-FLEX (SHOP APPLIED)

CCS EXTRUSION FACTORY APPLIED TO PANEL

ALUMINUM COMPOSITE PANEL

OPEN CELL BACKER ROD AND SILICONE SEALANT (NOT BY COMPOSITECORE)

WINDOW SYSTEM (NOT BY COMPOSITECORE)



COPYRIGHT COMPOSITEcore / DORALCO

COMPOSITEcore
'Architectural Cladding Systems'

A Division Of DORALCO - Architectural Metal Solutions

5919 W. 118th Street
Alsip, IL 60803

Tele: 708.388.9324
Fax: 708.388.9392

www.doralco.com

WINDOW JAMB (ALTERNATE A)

TITLE:

CCRS - DRY JOINT RAIN SCREEN SYSTEM
1000 SERIES (3/4\" JOINT)

PROJECT:

DRAWN BY:

JOB No:

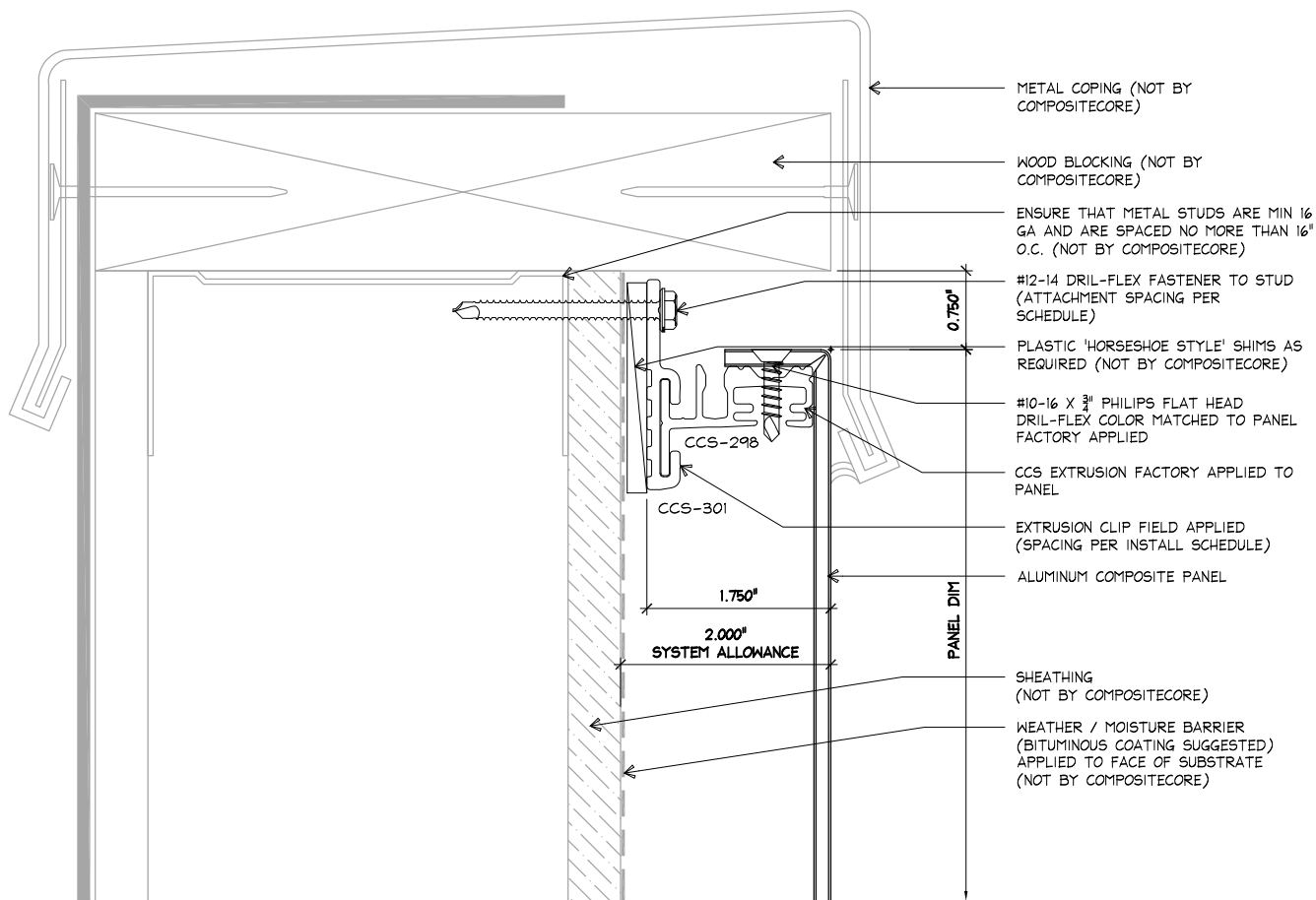
CHECK BY:

DATE:

D-17

SHEET No:

OF:



COPYRIGHT COMPOSITEcore / DORALCO

COMPOSITEcore
'Architectural Cladding Systems'

A Division Of DORALCO - Architectural Metal Solutions
5919 W. 118th Street
Alsip, IL 60803
Tele: 708.388.9324
Fax: 708.388.9392

www.doralco.com

SHEET METAL COPING

TITLE:

CCRS - DRY JOINT RAIN SCREEN SYSTEM
1000 SERIES (3/4" JOINT)

PROJECT:

DRAWN BY:

JOB No:

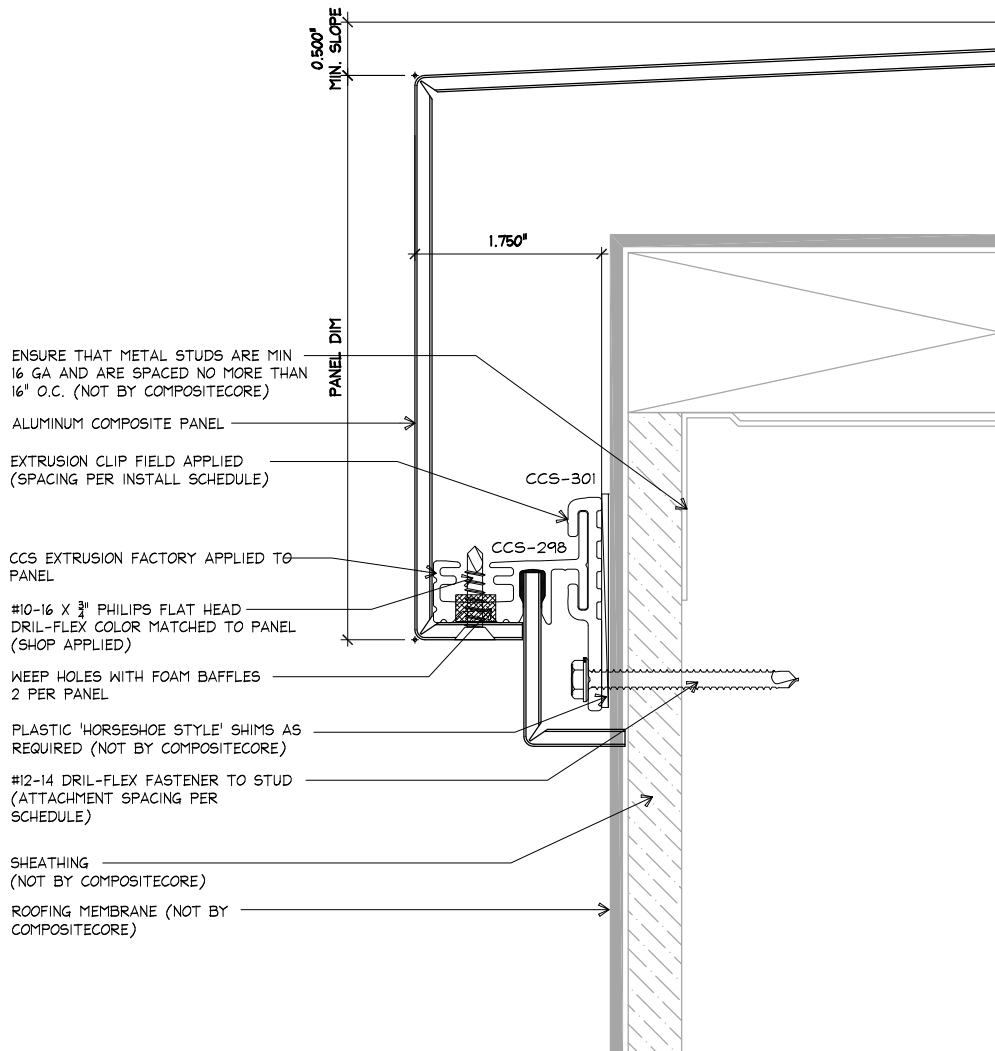
CHECK BY:

DATE:

D-18

SHEET No:

OF:



COPYRIGHT COMPOSITEcore / DORALCO

COMPOSITEcore
'Architectural Cladding Systems'

A Division Of DORALCO - Architectural Metal Solutions
5919 W. 118th Street
Alsip, IL 60803
Tele: 708.388.9324
Fax: 708.388.9392

www.doralco.com

ACM COPING (INSIDE)

TITLE:

CCRS - DRY JOINT RAIN SCREEN SYSTEM
1000 SERIES (3/4" JOINT)

PROJECT:

DRAWN BY:

JOB No:

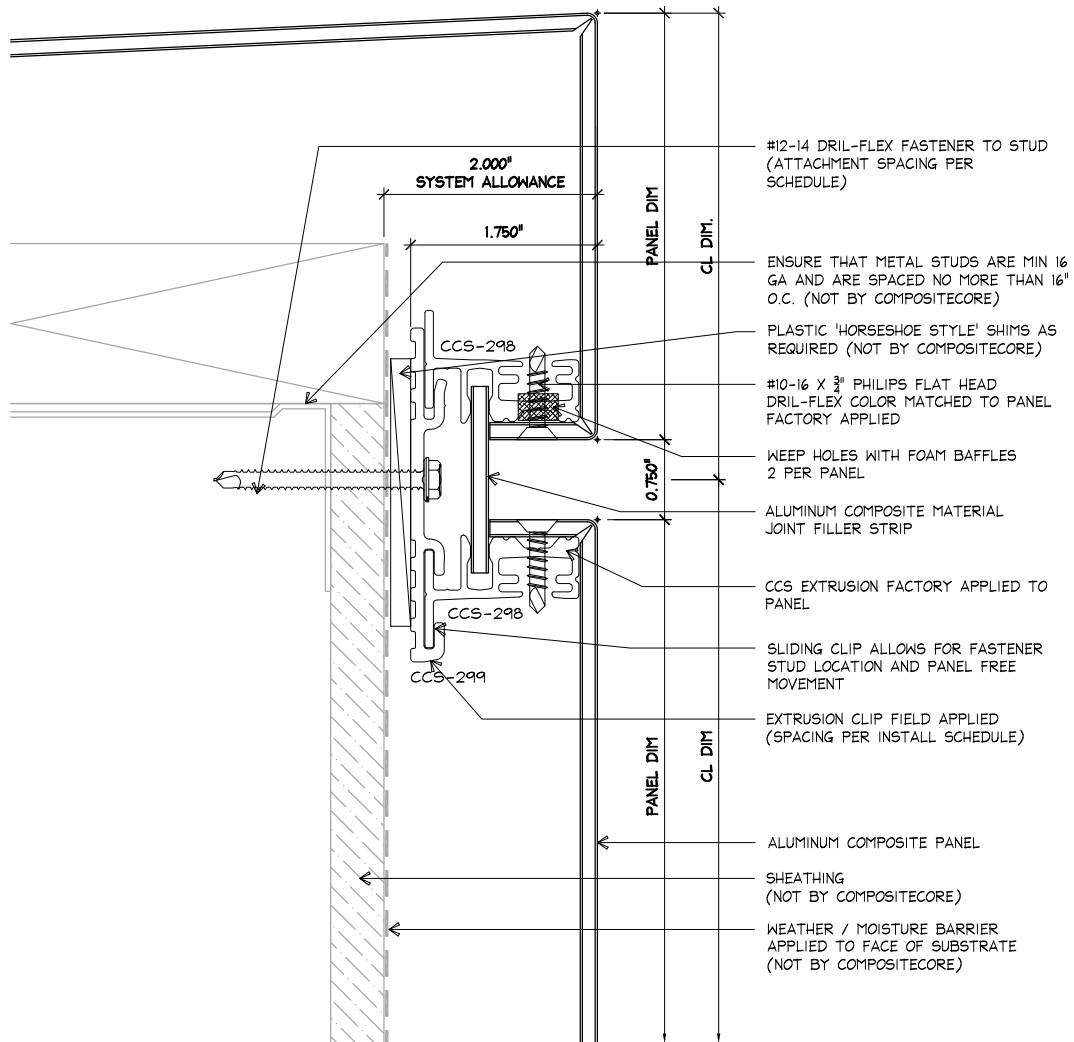
CHECK BY:

DATE:

D-19

SHEET No:

OF:



COPYRIGHT COMPOSITEcore / DORALCO

COMPOSITEcore
'Architectural Cladding Systems'

A Division Of DORALCO - Architectural Metal Solutions
5919 W. 118th Street
Alsip, IL 60803
Tele: 708.388.9324
Fax: 708.388.9392

www.doralco.com

ACM COPING (OUTSIDE)

TITLE:

CCRS - DRY JOINT RAIN SCREEN SYSTEM
1000 SERIES (3/4" JOINT)

PROJECT:

DRAWN BY:

JOB No:

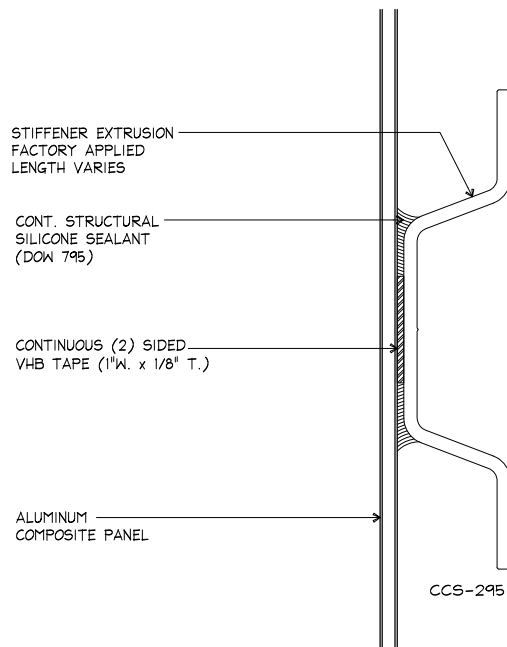
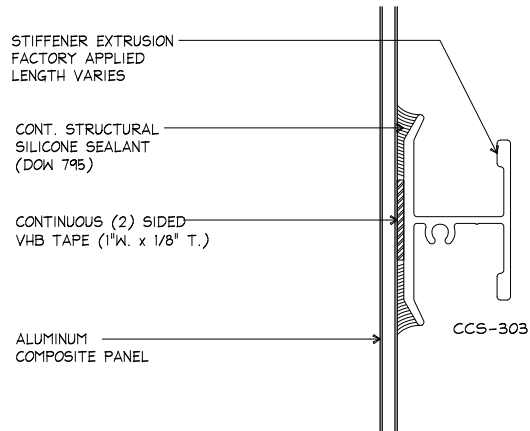
CHECK BY:

DATE:

D-20

SHEET No:

OF:



COPYRIGHT COMPOSITEcore / DORALCO

COMPOSITEcore
'Architectural Cladding Systems'

A Division Of DORALCO - Architectural Metal Solutions

5919 W. 118th Street
Alsip, IL 60803

Tele: 708.388.9324
Fax: 708.388.9392

www.doralco.com

STIFFENER OPTIONS

TITLE:

CCRS - DRY JOINT RAIN SCREEN SYSTEM
1000 SERIES (3/4" JOINT)

PROJECT:

DRAWN BY:

JOB No:

CHECK BY:

DATE:

D-STIF

SHEET No:

OF:

ENSURE THAT METAL STUDS ARE MIN 16 GA AND ARE SPACED NO MORE THAN 16" O.C. (NOT BY COMPOSITECORE)

CCRS EXTRUSION CLIP FIELD APPLIED (SPACING PER INSTALL SCHEDULE)

CCRS CONTINUOUS SYSTEM EXTRUSION (FACTORY APPLIED TO PANEL)

SHEATHING (NOT BY COMPOSITECORE)

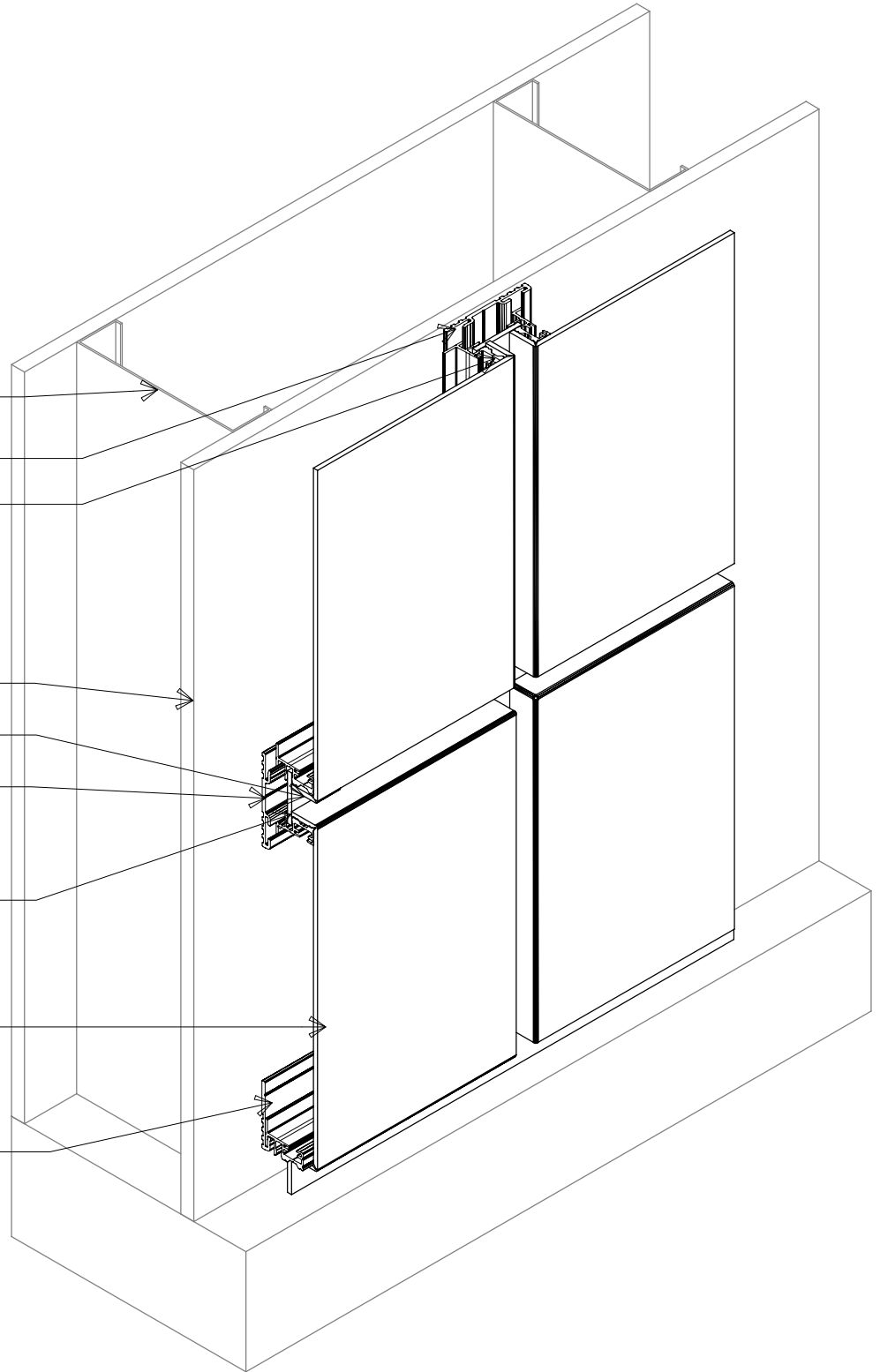
STANDARD RAINSCREEN JOINT

SLIDING CLIP ALLOWS FOR FASTENER STUD LOCATION AND PANEL FREE MOVEMENT

ALUMINUM COMPOSITE PANEL JOINT FILLER STRIP

ALUMINUM COMPOSITE PANEL

CCRS EXTRUSION CLIP FIELD APPLIED (SPACING PER INSTALL SCHEDULE)



COPYRIGHT COMPOSITEcore / DORALCO

COMPOSITEcore
'Architectural Cladding Systems'

A Division Of DORALCO - Architectural Metal Solutions

5919 W. 118th Street
Alsip, IL 60803

Tele: 708.388.9324
Fax: 708.388.9392

www.doralco.com

SYSTEM ISOMETRIC

TITLE:

CCRS-DRY JOINT RAIN SCREEN SYSTEM
1000 SERIES (3/4" JOINT)

PROJECT:

DRAWN BY:

JOB No:

CHECK BY:

DATE:

S-01

SHEET No:

OF:



CCS-302

TYPICAL STARTER CLIP
(3-1/2" CUT LENGTH)



CCS-301

TYPICAL TERMINATION CLIP
(3-1/2" CUT LENGTH)



CCS-402

STARTING JOINT CLIP
(3-1/2" CUT LENGTH)



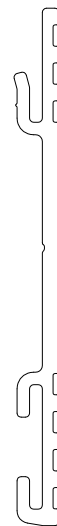
CCS-400

1/2" JOINT CLIP
(3-1/2" CUT LENGTH)



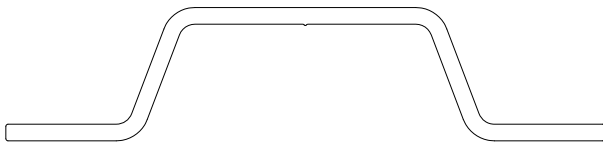
CCS-299

3/4" JOINT CLIP
(3-1/2" CUT LENGTH)



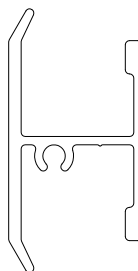
CCS-500

1 1/2" JOINT CLIP
(3-1/2" CUT LENGTH)



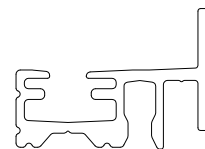
CCS-295

PANEL STIFFENER



CCS-303

PANEL STIFFENER



CCS-298

TYPICAL ROUT &
RETURN EXTRUSION

COPYRIGHT COMPOSITEcore / DORALCO

COMPOSITEcore
'Architectural Cladding Systems'

A Division Of DORALCO - Architectural Metal Solutions
5919 W. 118th Street
Alsip, IL 60803
Tele: 708.388.9324
Fax: 708.388.9392

www.doralco.com

SYSTEM EXTRUSIONS

TITLE:

CCRS - DRY JOINT RAIN SCREEN SYSTEM

PROJECT:

DRAWN BY:

JOB No:

CHECK BY:

DATE:

S-02

SHEET No:

OF:

ENSURE THAT METAL STUDS ARE MIN 16 GA
AND ARE SPACED NO MORE THAN 16" O.C.
(NOT BY COMPOSITECORE)

SHEATHING
(NOT BY COMPOSITECORE)

WEATHER / MOISTURE BARRIER
(BITUMINOUS COATINGS SUGGESTED
APPLIED TO FACE OF SUBSTRATE
(NOT BY COMPOSITECORE)

PLASTIC 'HORSESHOE STYLE' SHIMS AS
REQUIRED (NOT BY COMPOSITECORE)

EXTRUSION CLIP FIELD APPLIED
(SPACING PER INSTALL SCHEDULE)

#12-14 DRILL-FLEX FASTENER AT STUD
(ATTACHMENT SPACING PER SCHEDULE)

ALUMINUM COMPOSITE MATERIAL
JOINT FILLER STRIP

CCS-298 EXTRUSION
(FACTORY APPLIED TO PANEL)

#10-16 X $\frac{3}{8}$ " PHILIPS FLAT HEAD
DRILL-FLEX COLOR MATCHED TO PANEL
(FACTORY APPLIED TO PANEL)

ALUMINUM COMPOSITE PANEL

CCS-400, CCS-299,
OR CCS-500

CCS-298

CCS-298

COPYRIGHT COMPOSITEcore / DORALCO

COMPOSITEcore
'Architectural Cladding Systems'

A Division Of DORALCO - Architectural Metal Solutions

5919 W. 118th Street
Alsip, IL 60803

Tele: 708.388.9324
Fax: 708.388.9392

www.doralco.com

ASSEMBLY DETAIL

TITLE:

CCRS - DRY JOINT RAIN SCREEN SYSTEM

PROJECT:

DRAWN BY:

JOB No:

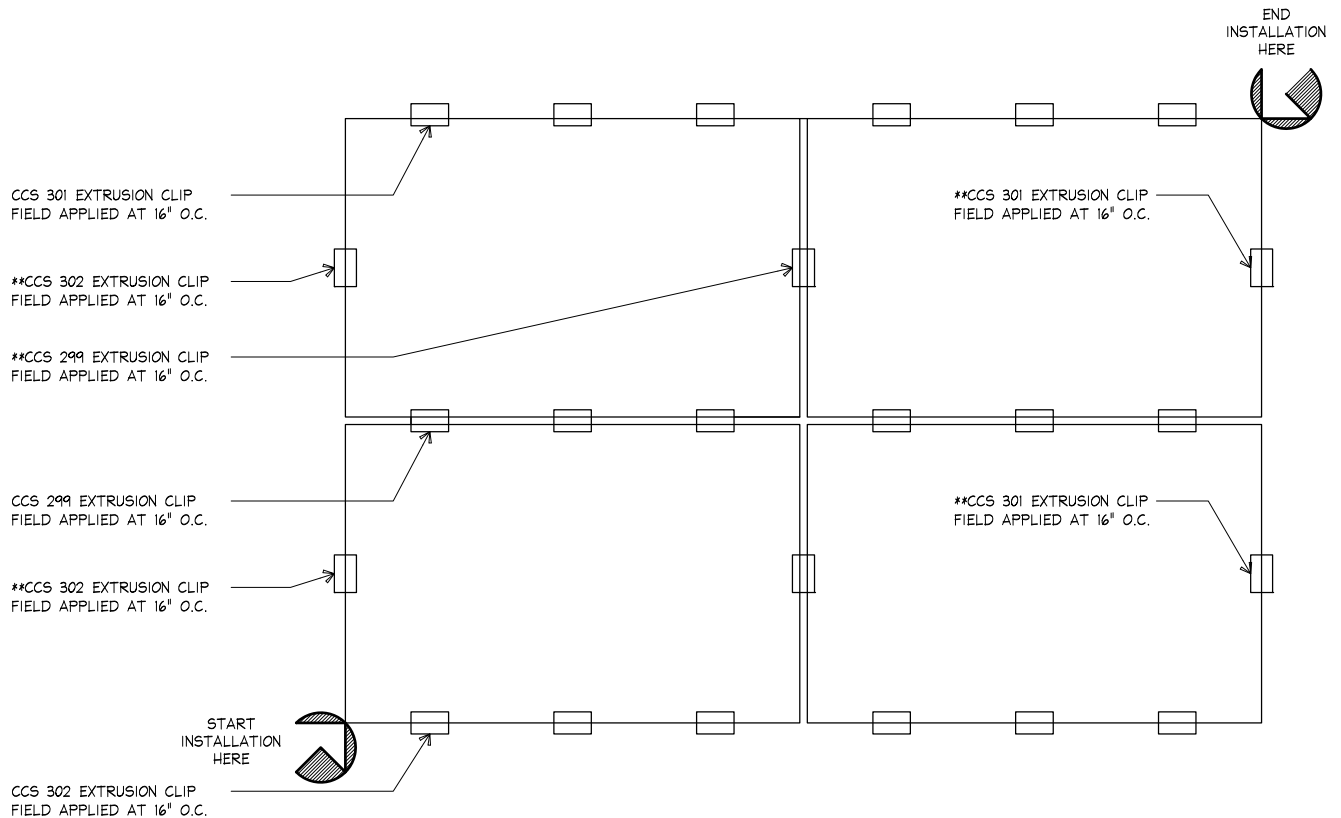
CHECK BY:

DATE:

S-03

SHEET No:

OF:



****NOTE:**
PANEL CLIP AT MIDSPAN OF PANEL
WHEN PANEL HEIGHT EXCEEDS 36"

COPYRIGHT COMPOSITEcore / DORALCO

COMPOSITEcore
'Architectural Cladding Systems'

A Division Of DORALCO - Architectural Metal Solutions
5919 W. 118th Street
Alsip, IL 60803
Tele: 708.388.9324
Fax: 708.388.9392
www.doralco.com

TYPICAL PANEL CLIP LAYOUT

TITLE:

CCRS - DRY JOINT RAIN SCREEN SYSTEM

PROJECT:

DRAWN BY:

JOB No:

CHECK BY:

DATE:

S-04

SHEET No:

OF:

EDGE OF ALUMINUM COMPOSITE
MATERIAL JOINT FILLER STRIP
(BEYOND)

ALUMINUM COMPOSITE MATERIAL
JOINT FILLER STRIP

ALUMINUM COMPOSITE PANEL

ALUMINUM COMPOSITE MATERIAL
JOINT FILLER STRIP

JOINT DIMENSION

2.00' TYP.

JOINT DIMENSION

COPYRIGHT COMPOSITEcore / DORALCO

COMPOSITEcore
'Architectural Cladding Systems'

A Division Of DORALCO - Architectural Metal Solutions
5919 W. 118th Street Tele: 708.388.9324
Alsip, IL 60803 Fax: 708.388.9392

www.doralco.com

FILLER JOINT DETAIL

TITLE:

CCRS - DRY JOINT RAIN SCREEN SYSTEM

PROJECT:

DRAWN BY:

JOB No:

CHECK BY:

DATE:

S-05

SHEET No:

OF: