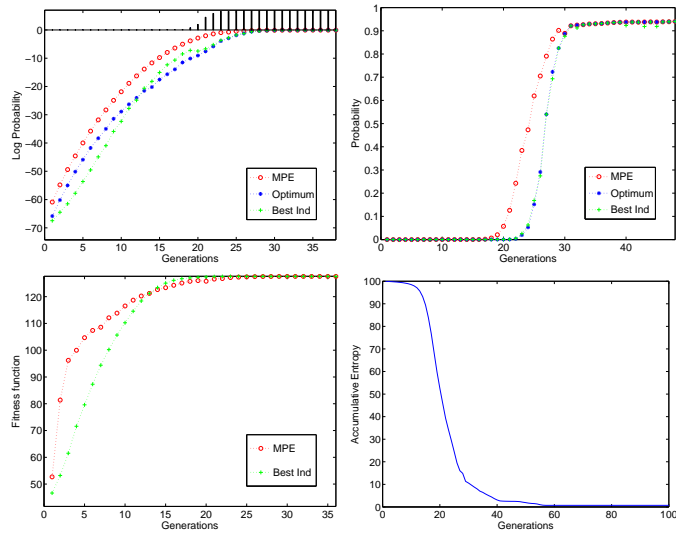


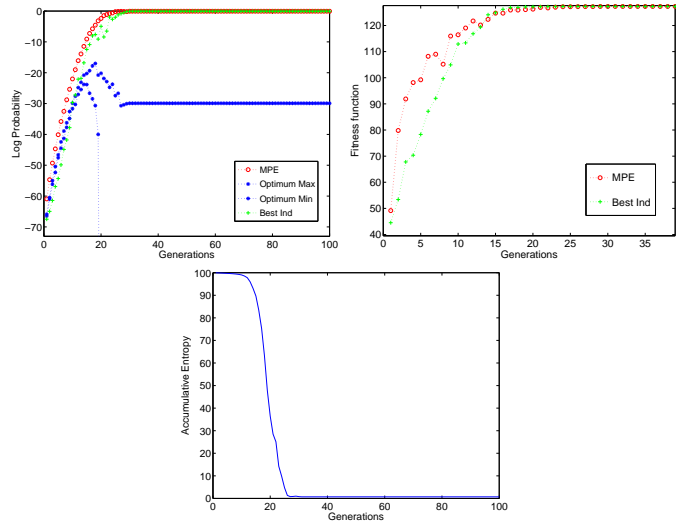
# 1. Structural learning (B algorithm)

## 1.1. Population size: bisection

### 1.1.1. 47 successful runs

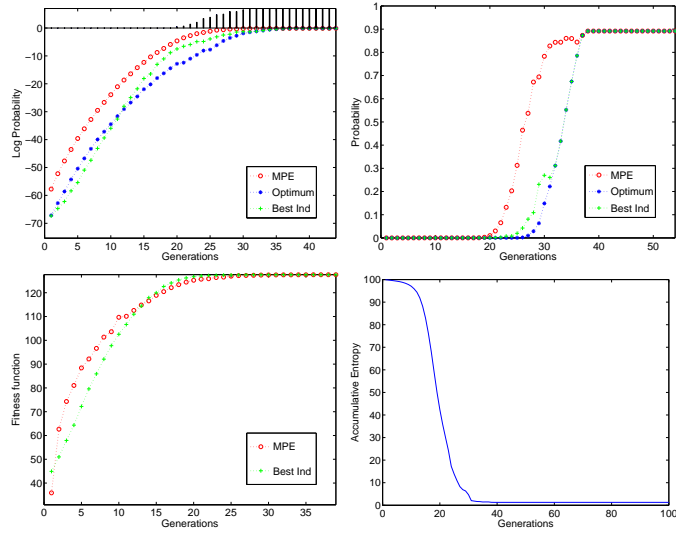


### 1.1.2. 3 unsuccessful run

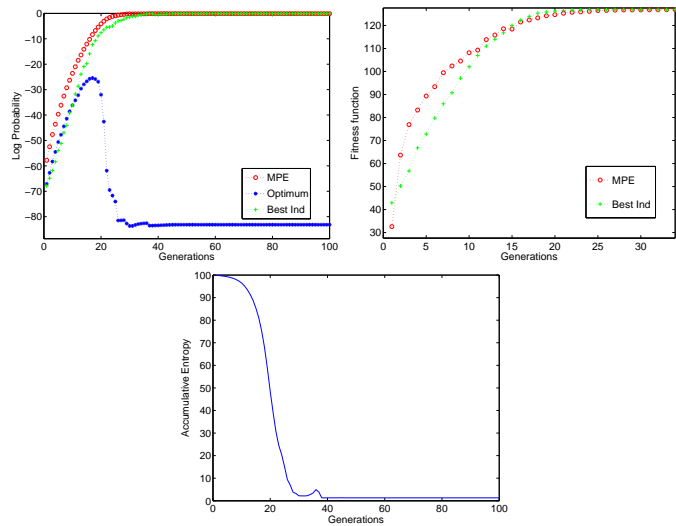


## 1.2. Population size: half of bisection

### 1.2.1. 31 successful runs



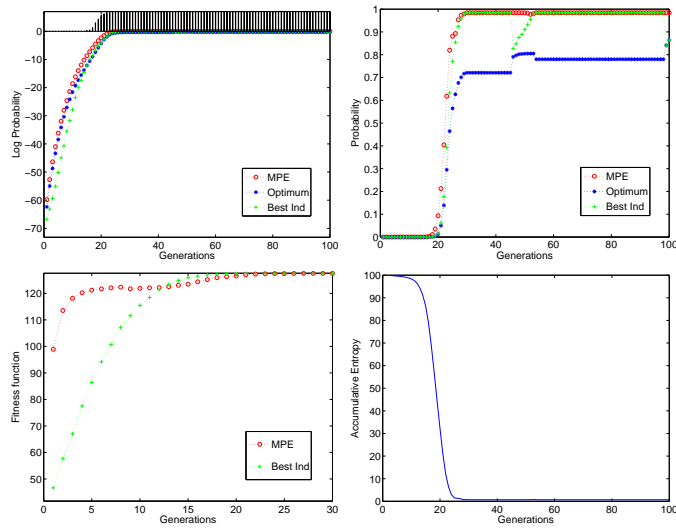
### 1.2.2. 19 unsuccessful runs



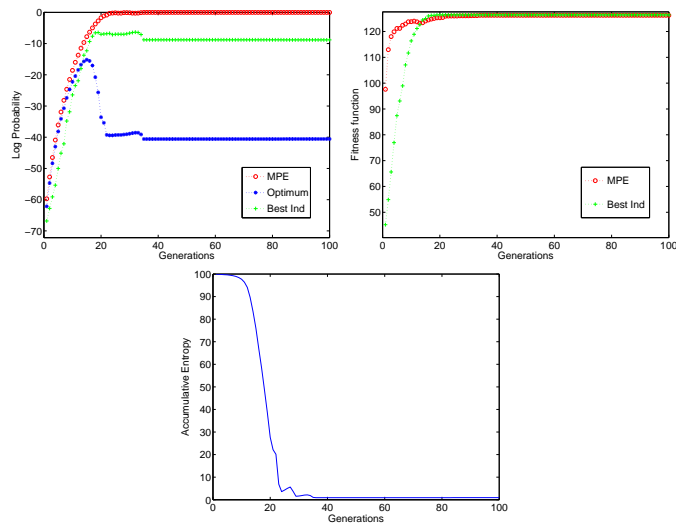
## 2. Using Complete structure

### 2.1. Population size: bisection

#### 2.1.1. 44 successful runs

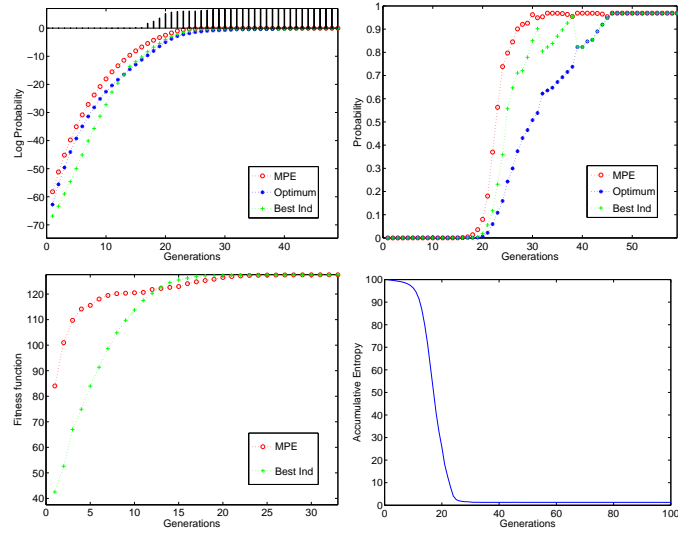


#### 2.1.2. 6 successful runs

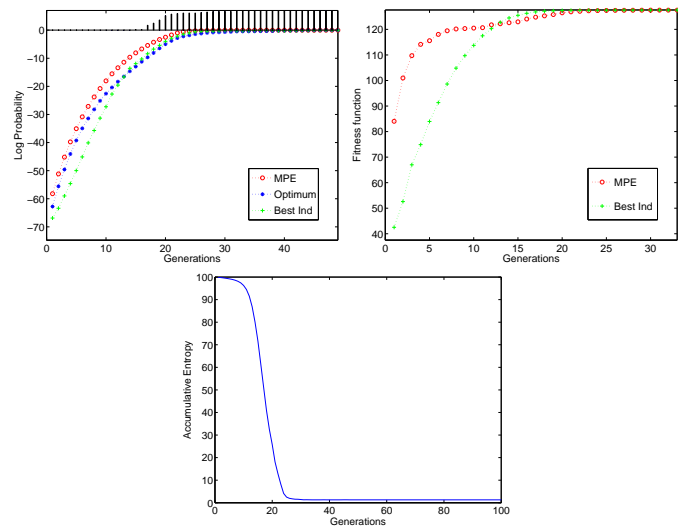


## 2.2. Population size: half of bisection

### 2.2.1. 37 successful runs



### 2.2.2. 13 unsuccessful runs



### **3. Using Bivariate structure**

**0 successful runs**