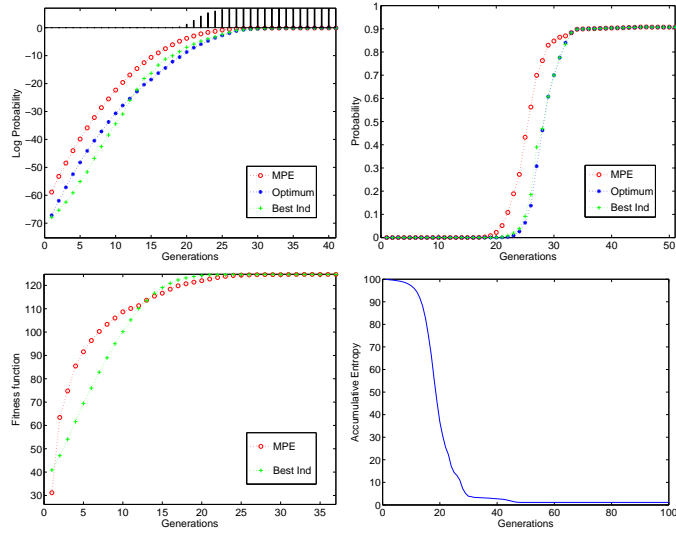


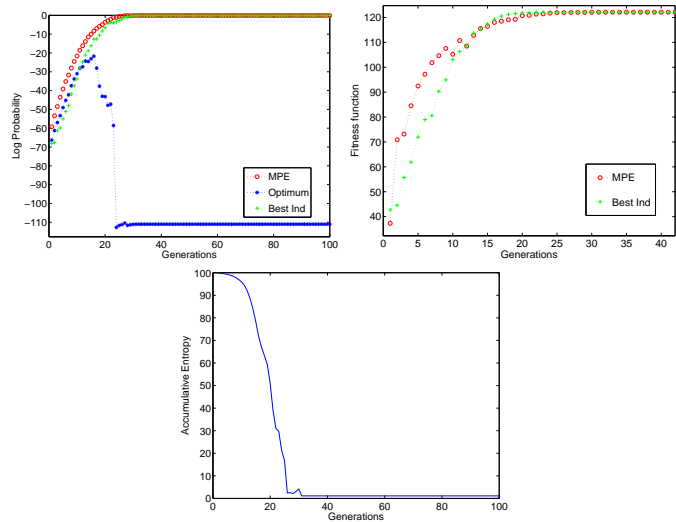
# 1. Structural learning (B algorithm)

## 1.1. Population size: bisection

### 1.1.1. 46 successful runs

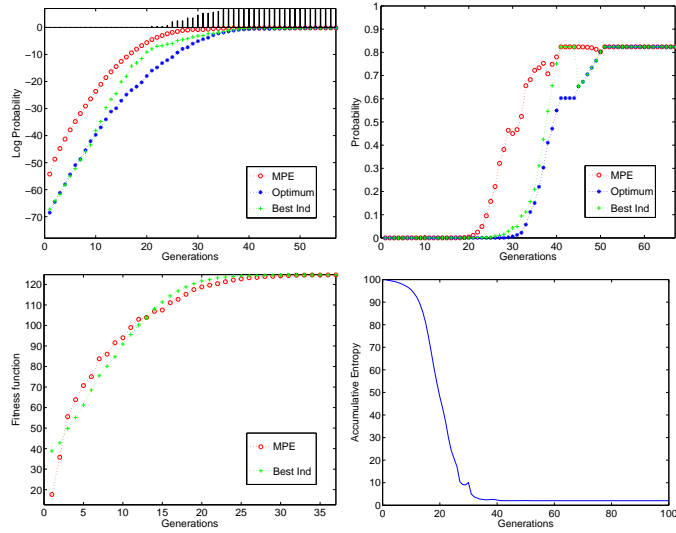


### 1.1.2. 4 unsuccessful run

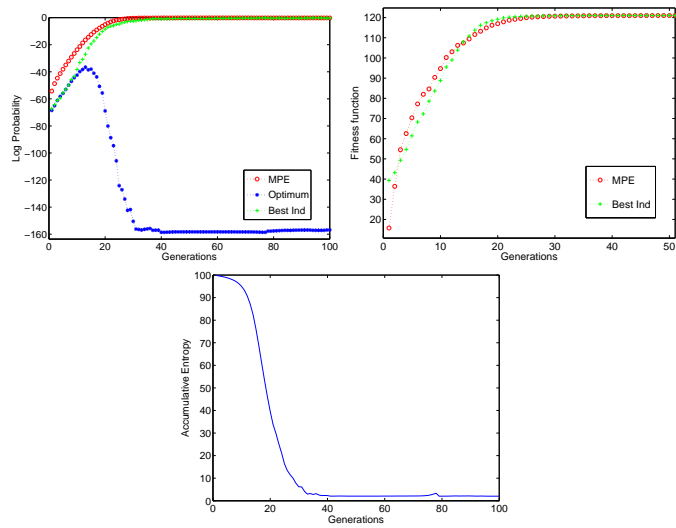


## 1.2. Population size: half of bisection

### 1.2.1. 20 successful runs



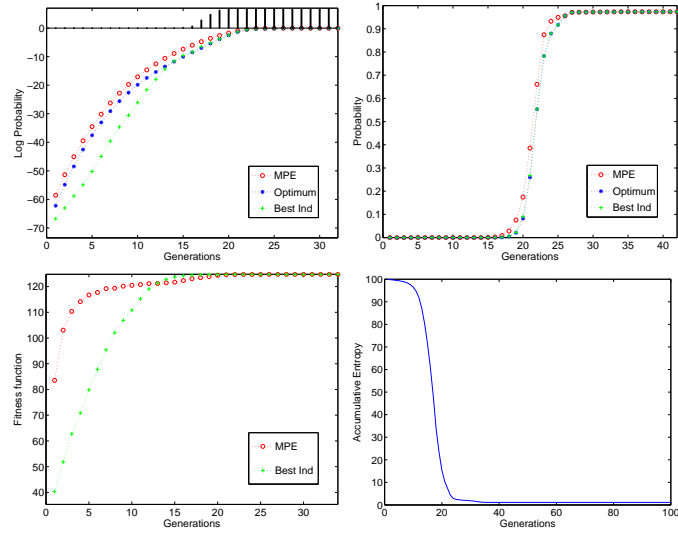
### 1.2.2. 30 unsuccessful runs



## 2. Using Complete structure

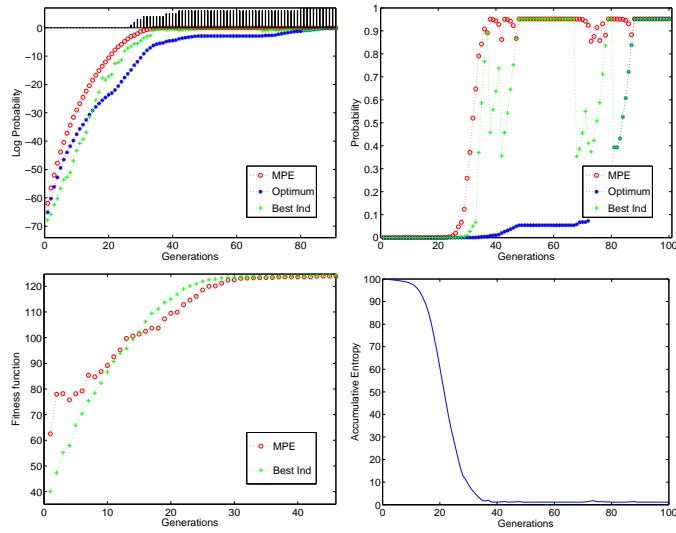
### 2.1. Population size: bisection

#### 2.1.1. 50 successful runs

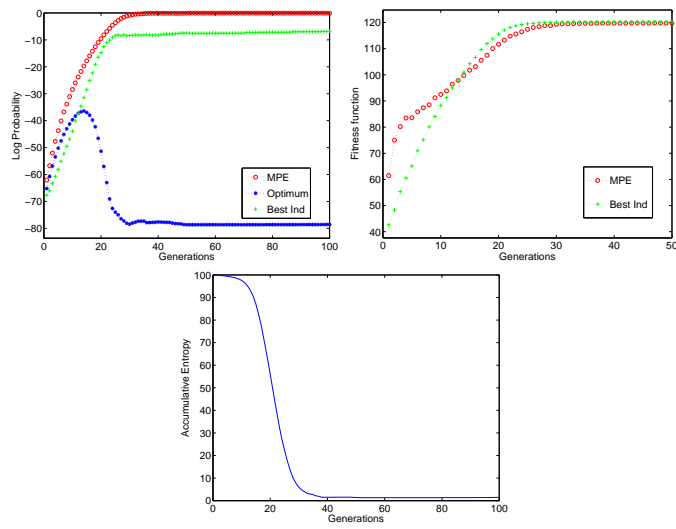


## 2.2. Population size: half of bisection

### 2.2.1. 7 successful runs

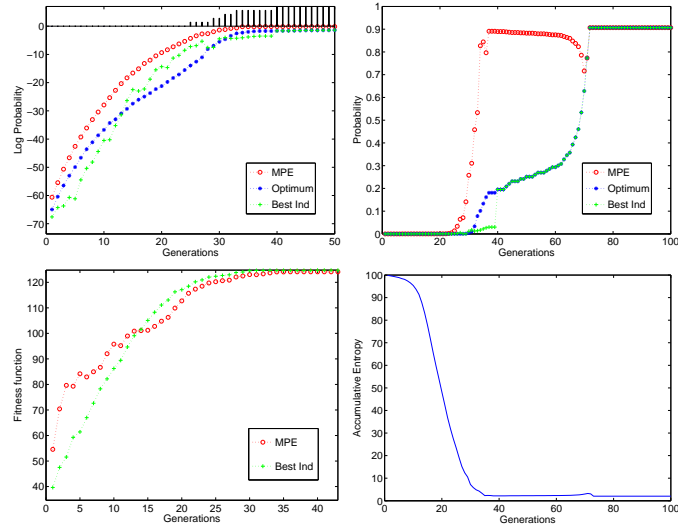


### 2.2.2. 43 unsuccessful runs



### 3. Using Bivariate structure

#### 3.0.3. 5 successful runs



#### 3.0.4. 45 unsuccessful runs

