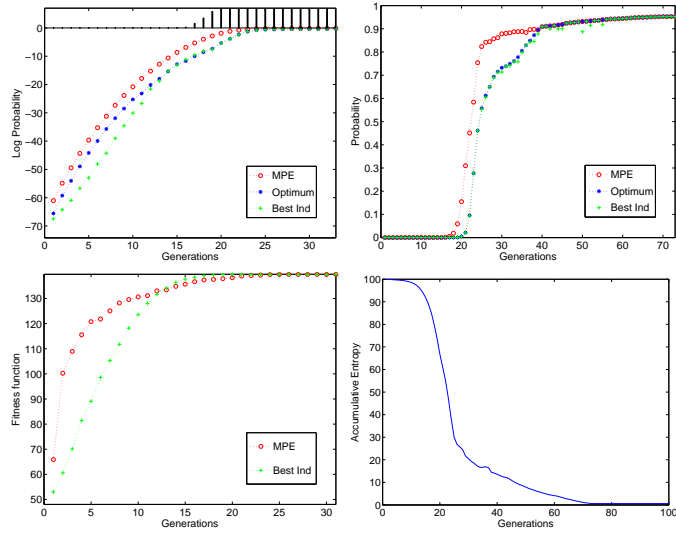


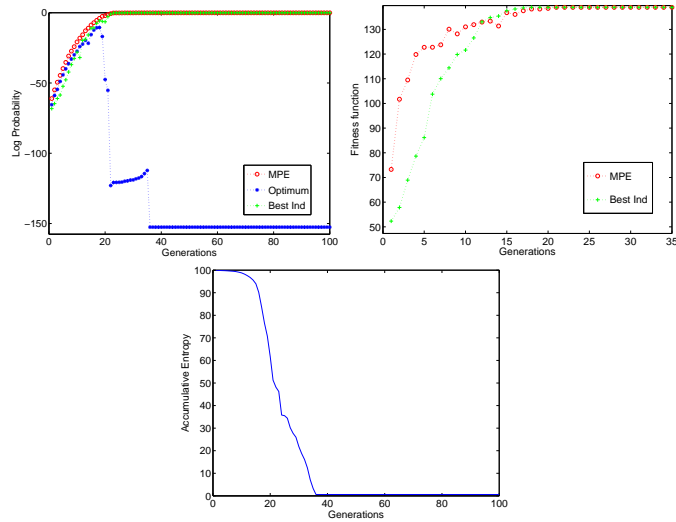
1. Structural learning (B algorithm)

1.1. Population size: bisection

1.1.1. 48 successful runs

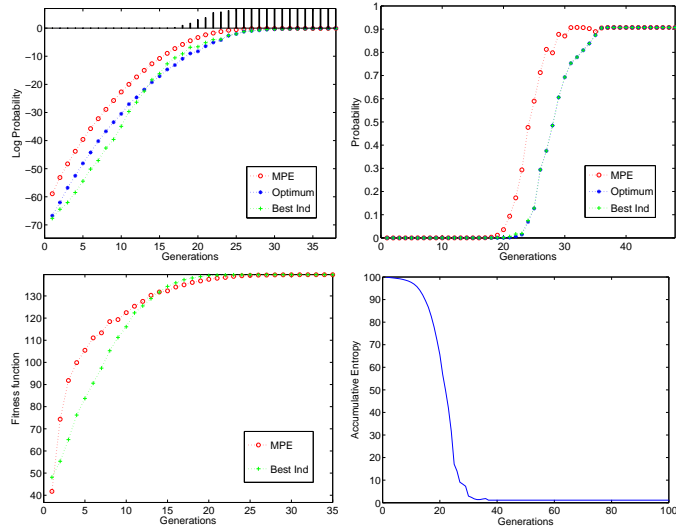


1.1.2. 2 unsuccessful run

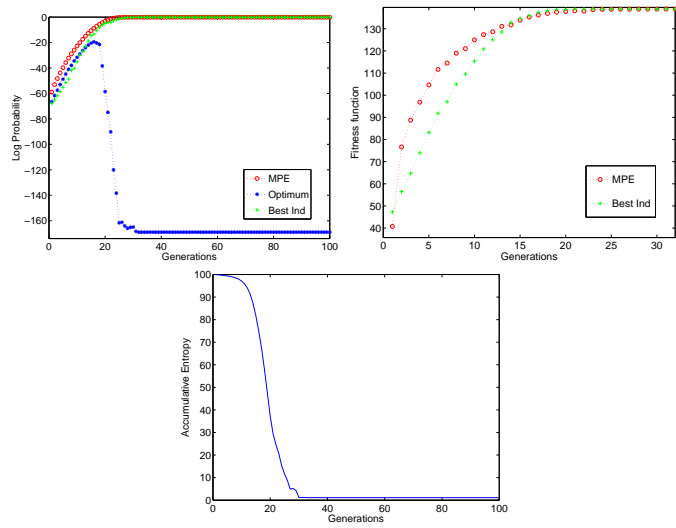


1.2. Population size: half of bisection

1.2.1. 28 successful runs



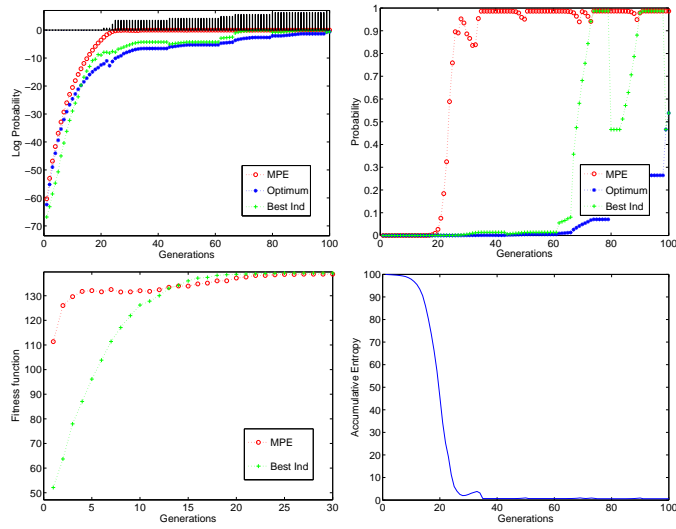
1.2.2. 22 unsuccessful runs



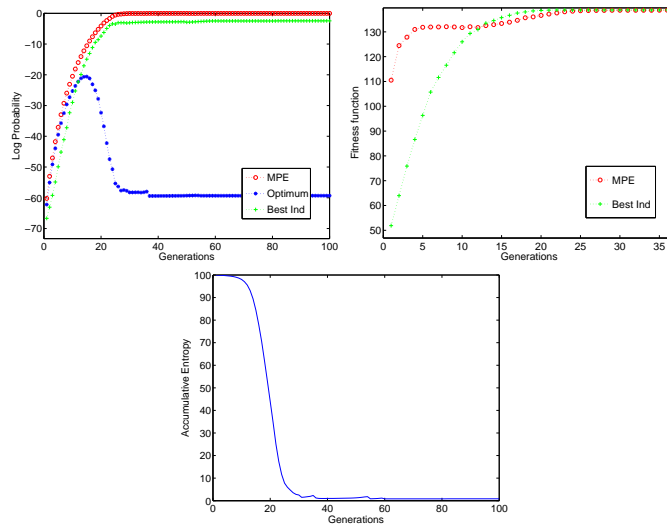
2. Using Complete structure

2.1. Population size: bisection

2.1.1. 10 successful runs

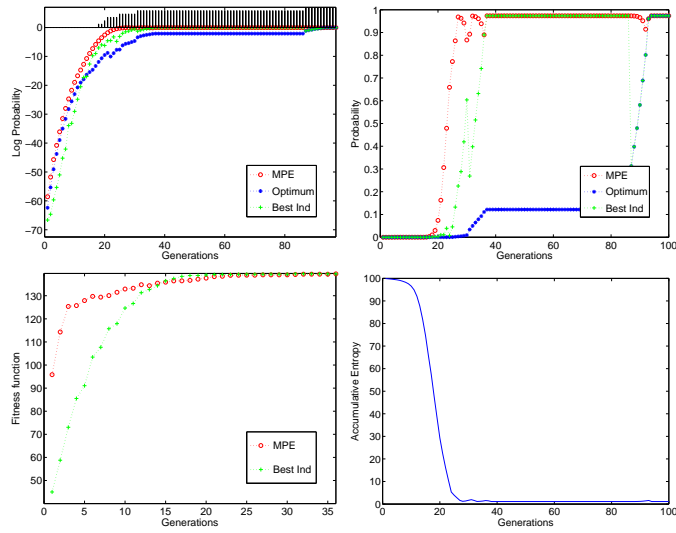


2.1.2. 40 unsuccessful runs

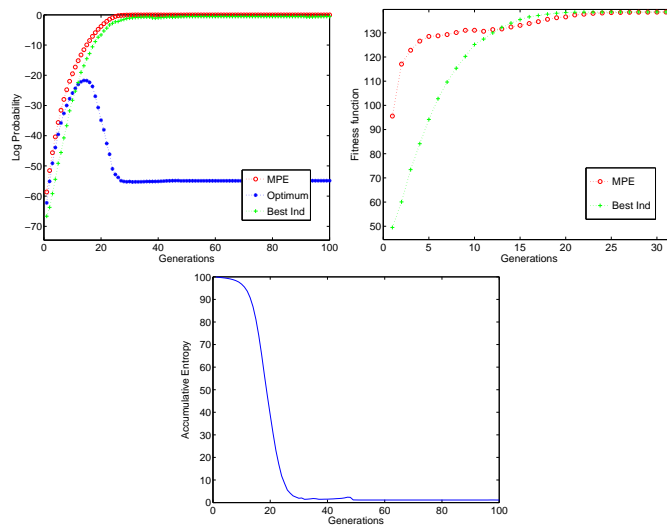


2.2. Population size: half of bisection

2.2.1. 6 successful runs



2.2.2. 44 unsuccessful runs

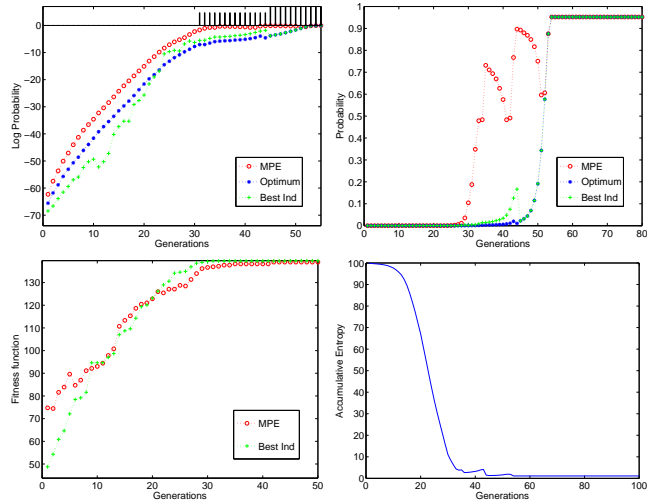


3. Using Bivariate structure

3.1. Population size: bisection (0 succesful runs)

3.2. Population size: half of bisection

3.2.1. 3 successful runs



3.2.2. 47 unsuccessful runs

