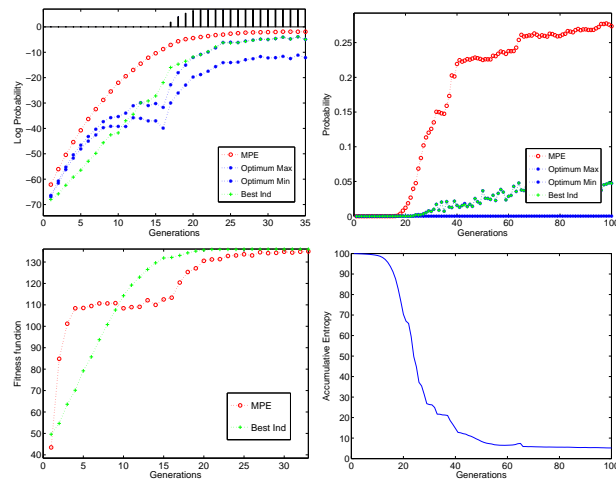


1. Structural learning (B algorithm)

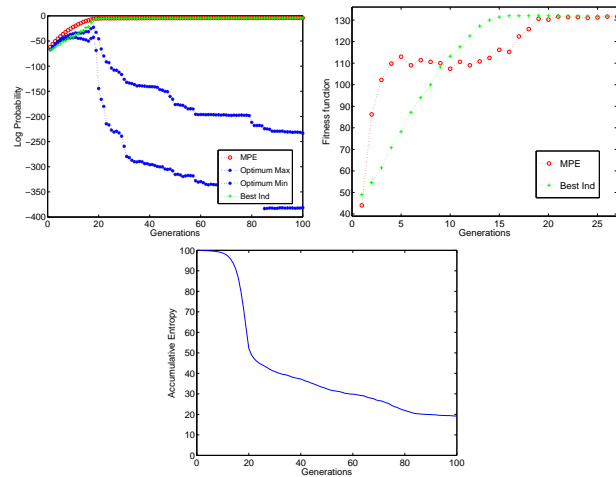
The calculation of the MPE (or MPS in the EDA context) is intractable in certain generations when EBNA uses the population size given by bisection.

1.1. Population size: half of bisection

1.1.1. 30 successful runs



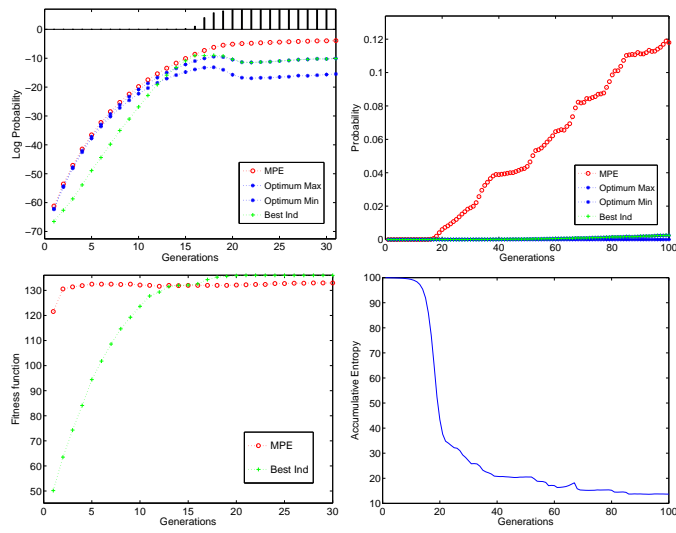
1.1.2. 20 unsuccessful runs



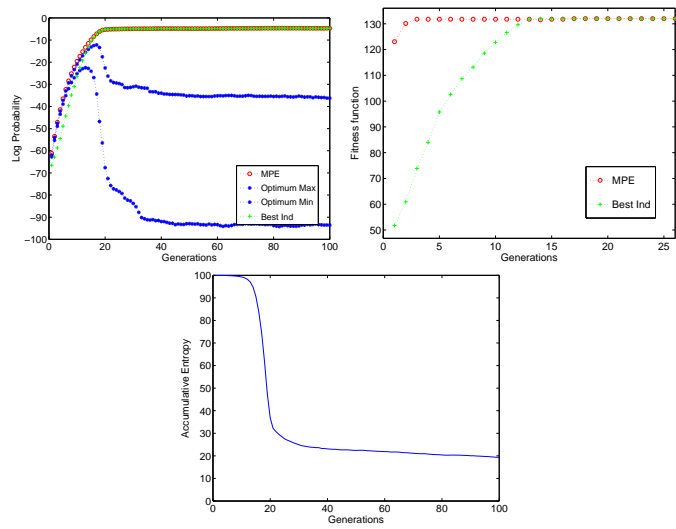
2. Using Complete structure

2.1. Population size: bisection

2.1.1. 33 successful runs

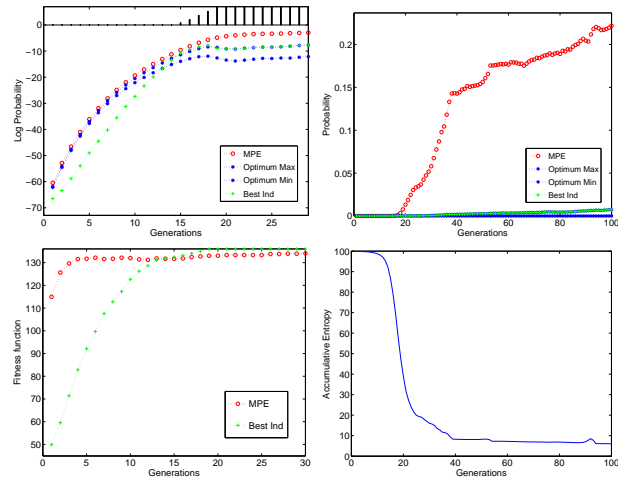


2.1.2. 17 unsuccessful runs

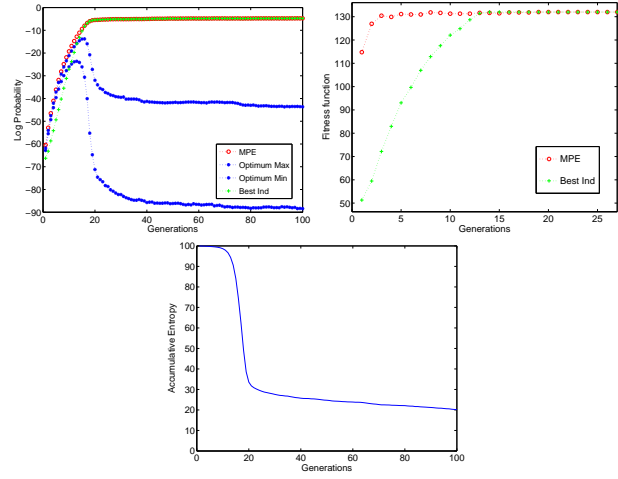


2.2. Population size: half of bisection

2.2.1. 27 successful runs



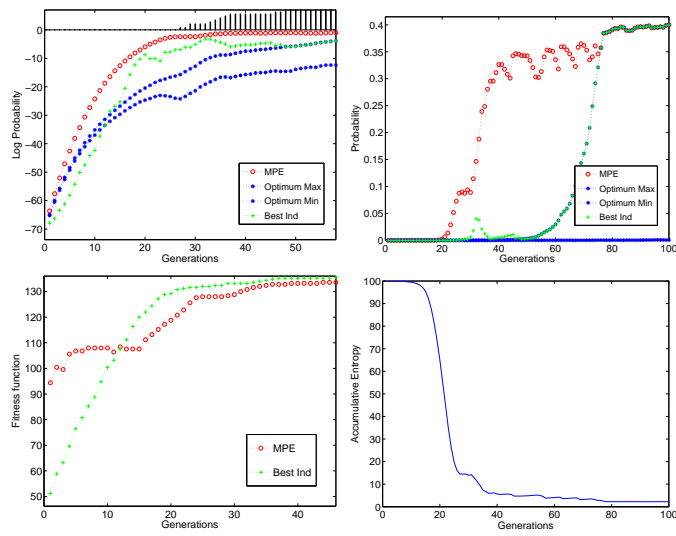
2.2.2. 23 unsuccessful runs



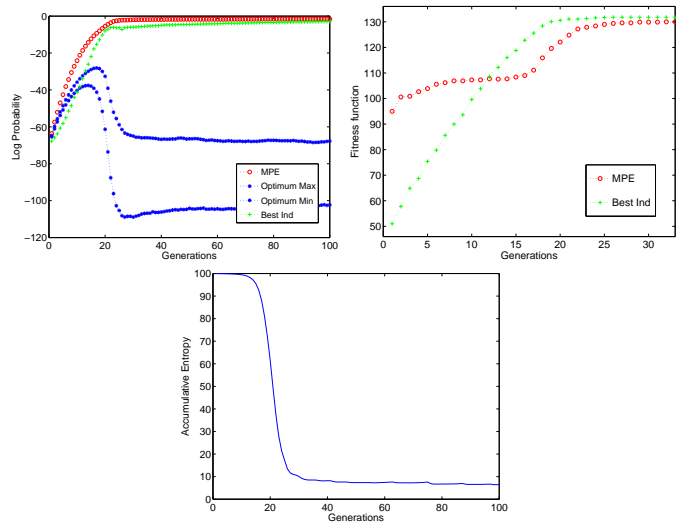
3. Using Bivariate structure

3.1. Population size: bisection

3.1.1. 10 successful runs

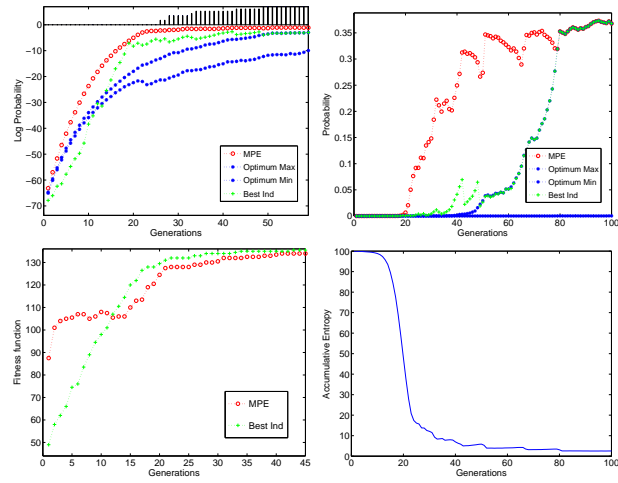


3.1.2. 40 unsuccessful runs



3.2. Population size: half of bisection

3.2.1. 8 successful runs



3.2.2. 42 unsuccessful runs

