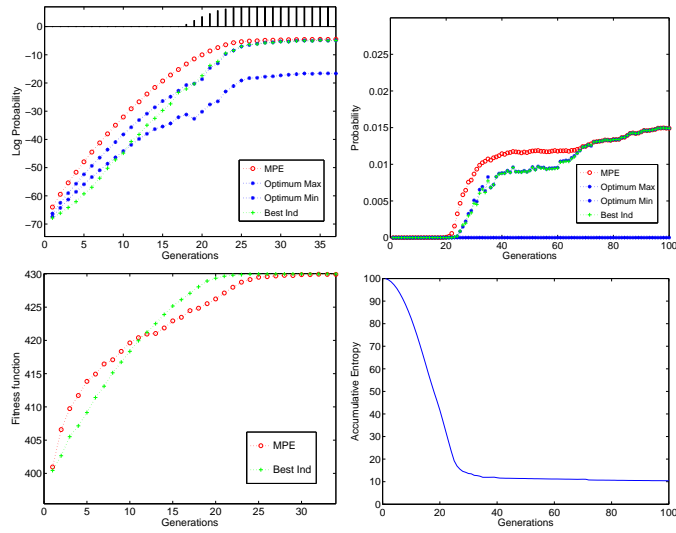


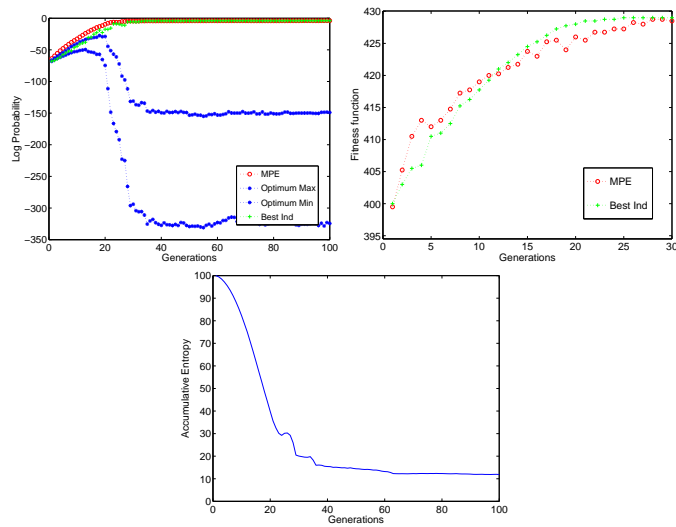
1. Structural learning (B algorithm)

1.1. Population size: bisection

1.1.1. 46 successful runs

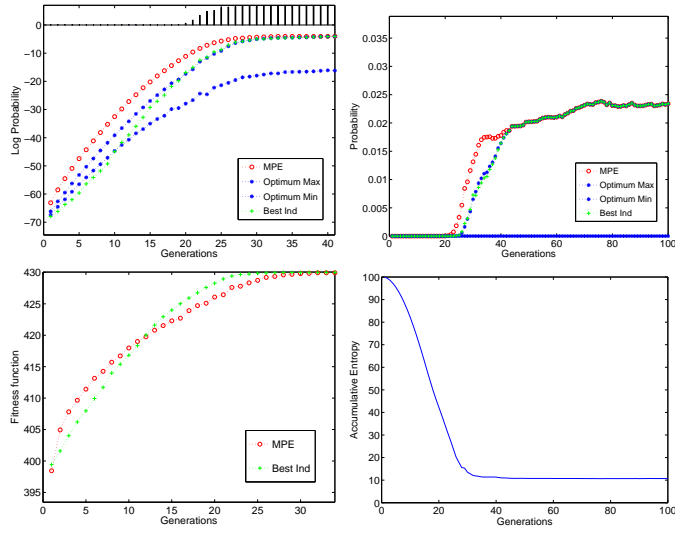


1.1.2. 4 unsuccessful runs

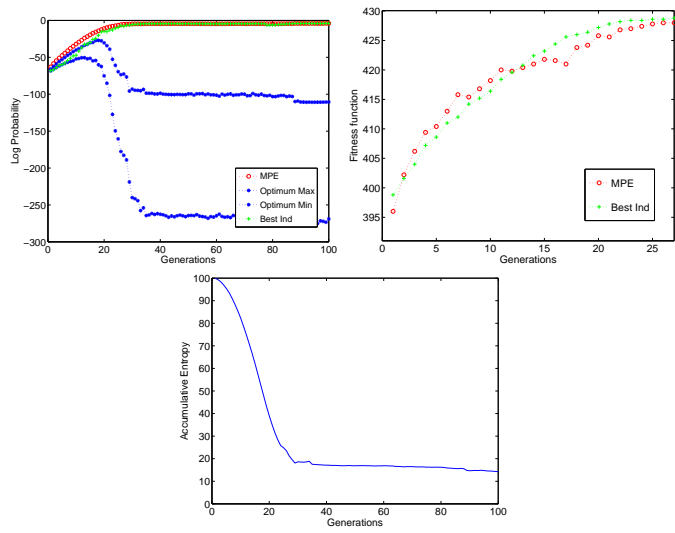


1.2. Population size: half of bisection

1.2.1. 45 successful runs



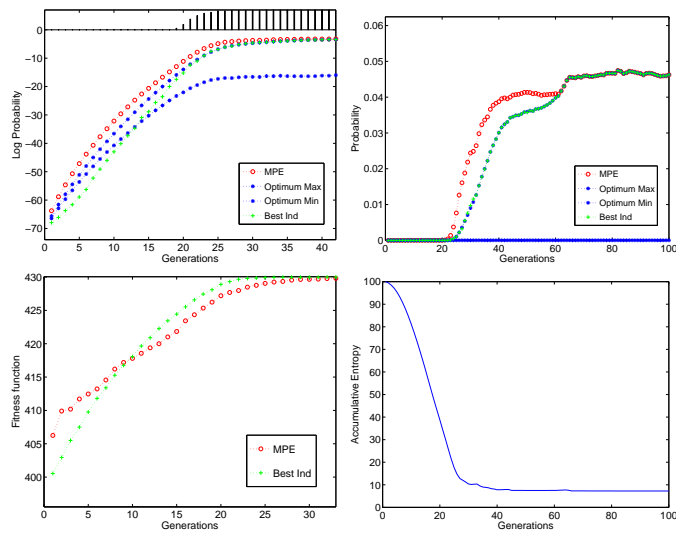
1.2.2. 5 unsuccessful runs



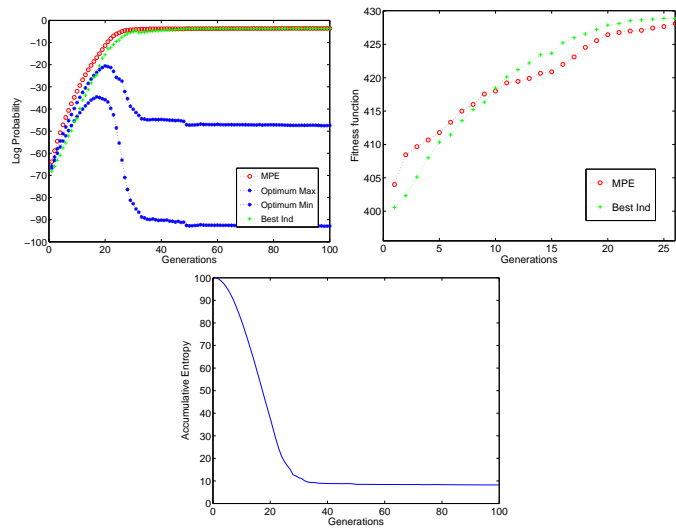
2. Using Complete structure

2.1. Population size: bisection

2.1.1. 41 successful runs

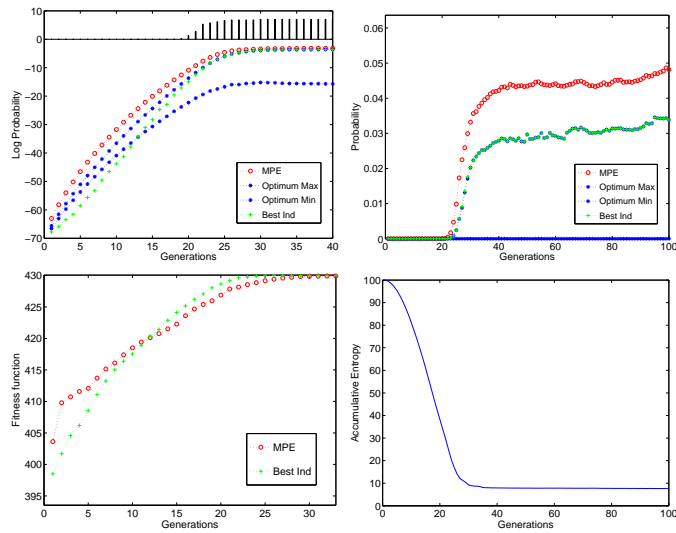


2.1.2. 9 unsuccessful runs

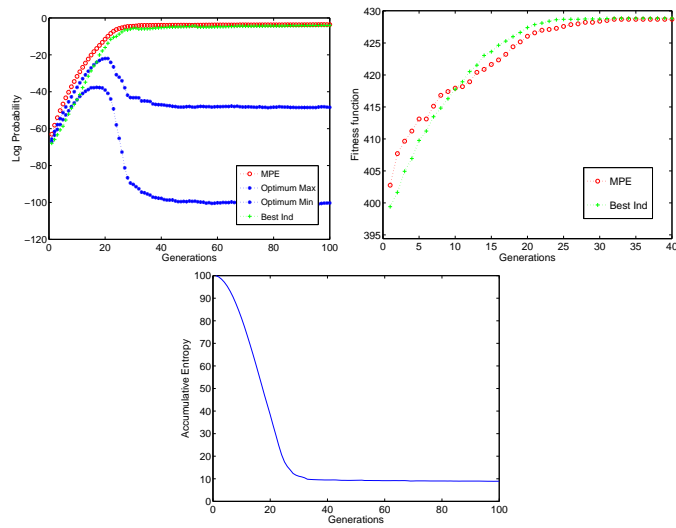


2.2. Population size: half of bisection

2.2.1. 33 successful runs



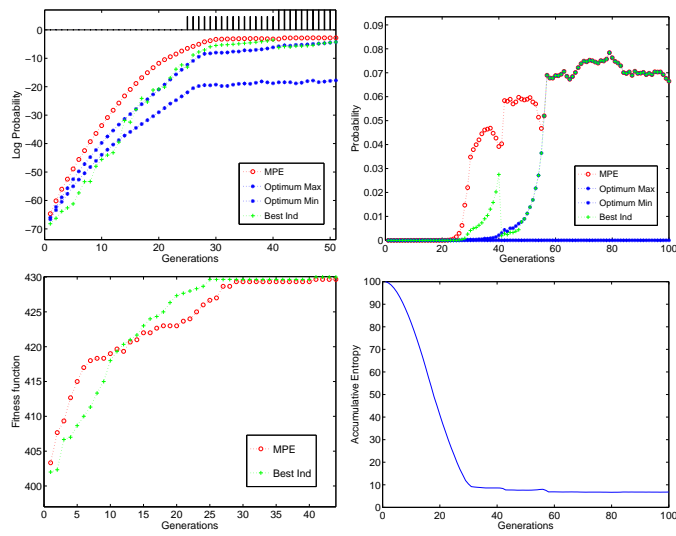
2.2.2. 17 unsuccessful runs



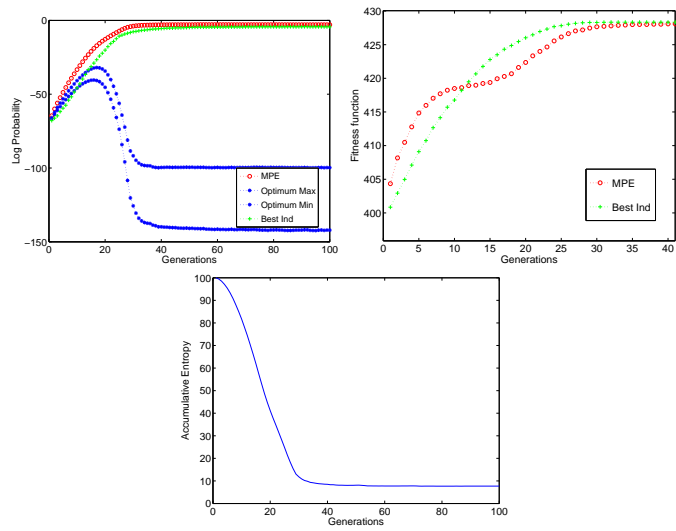
3. Using Bivariate structure

3.1. Population size: bisection

3.1.1. 3 successful runs

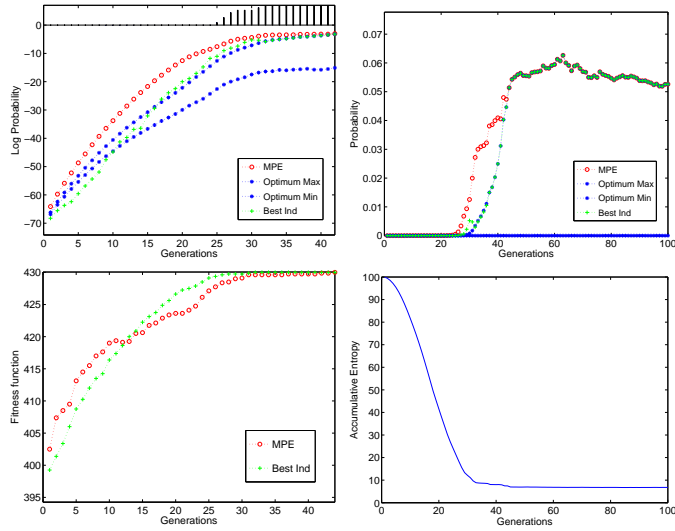


3.1.2. 47 unsuccessful runs



3.2. Population size: half of bisection

3.2.1. 8 successful runs



3.2.2. 42 unsuccessful runs

